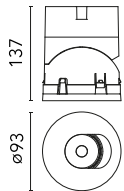


## Light Shadow Pro Ø 90 Adjustable Optic Super Spot

New

03.9980.06 - Chrome

LED lighting module, with low glare, to be inserted in the recessed frames (not included), installation through a bayonet system with interchangeable spots. Remote driver not included.

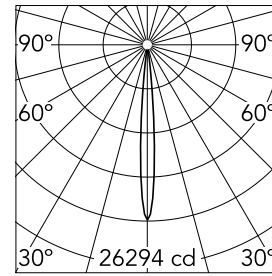


### Main specifications

Number of heads	1	Net lumen (lm)	768
Lamp category	LED	Mountings	Recessed
Power (W)	10W	Environment	Indoor dry location
CCT (K)	2700K		
CRI	90		

### Optical

Lighting type	Direct
LED type	LED array
Light distribution	Symmetric
Optical type	Super spot
Beam angle (°)	9
Beam angle C90-270 (°)	9



Beam Angle: 9°

h(m)	E(lx)	D(m)
1	26294	0.16
2	6573	0.31
3	2922	0.47
4	1643	0.62
5	1052	0.78

Luminous flux luminaire  
768 lm

### Electrical

Current (mA)	800	Insulation class	III
Dimmable	Yes		
Driver	Remote excluded		
Driver type	Non Dimmable, Dimmable DALI 2, Dimmable, Dimmable Casambi, Dimmable 1-10V, Dimmable DALI 1, Mains Cut Dimming		
Emergency	Without		

### Physical

Color	Chrome	Rotation (°)	355
Orientation	Adjustable	Spot diameter (mm)	90
Recessed depth (mm)	111		
Weight (kg)	0.54		
Tilt (°)	35		



# Light Shadow Pro Ø 90 Adjustable Optic Super Spot



---

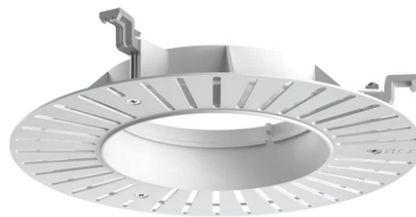
Continuous current power supply,  
Mains dimming, leading & trailing edge  
220/240V – 50/60Hz, 300mA-14W /  
350mA-17W / 400mA-19W /  
450/500/600/650/700/750/800/900mA –  
20W  
60.9467

---

Continuous current power supply,  
dimmable Casambi 220/240V-50/60Hz,  
300mA-16W / 350mA-18,5W / 400mA-  
21,5W / 450mA-24W / 500mA-27W /  
600mA-32W / 650mA-35W / 700mA-36W  
/750/800/900/950/1000/1050/1200mA –  
38W  
60.9207

---

Installation Frame Trim  
08.0165.40



---

Installation Frame Trim  
08.0165.14

---

Installation Frame No Trim  
08.0167.00

---

Continuous current power supply, 0/1-  
10V dimmable, 220/240V – 50/60Hz,  
300mA-16W / 350mA-18W / 400mA-21W  
/ 500mA-27W / 600mA-32W / 650mA-  
35W /  
700/750/800/900/950/1000/1050mA-36W  
60.9439



---

Continuous current power supply of 12-20W, 110/240V – 50/60Hz with power current selected through adjustable 350mA – 17W / 400mA – 19W / 450 / 550 / 600 / 700mA – 20W regulable Dali 1 y Dali 2  
60.9222



---

Continuous current supply source 240V – 50/60Hz with dimmable DALI 2, push dimming. 300mA-16W / 350mA-18W / 400mA-21W / 500mA-27W / 600mA-32W / 650mA-35W  
700/750/800/900/950/1000/1050mA-38W  
60.9186



---

Continuous current power supply 220/240V – 50/60Hz. Adjustable Current 300mA-13W / 350mA-15W / 400mA-18W / 450mA-20W / 500mA-22W / 550mA-24W / 600mA-27W / 650mA-29W / 700mA-31W / 750mA-32W / 800mA-33W / 850mA-35W / 900mA-38W / 950mA-40W / 1000/1050mA-42W  
60.9162



---

Continuous current power supply of 13-20W, 110/240V – 50/60Hz with power current selected through adjustable 300 mA – 15W / 350 mA – 18W / 400/450/500/550/600/ 650/700/750/800/850/900 mA – 15W. switch. 0/1-10V or push dimming  
60.9188