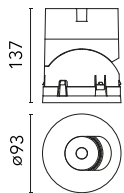
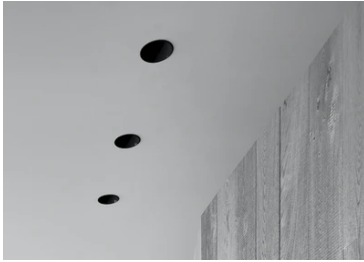


Light Shadow Pro Ø 90 Adjustable Optic Spot

New

03.9981.GL - Gold

LED lighting module, with low glare, to be inserted in the recessed frames (not included), installation through a bayonet system with interchangeable spots. Remote driver not included.

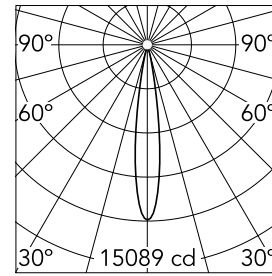


Main specifications

Number of heads	1	Net lumen (lm)	1316
Lamp category	LED	Mountings	Recessed
Power (W)	18W	Environment	Indoor dry location
CCT (K)	2700K		
CRI	90		

Optical

Lighting type	Direct
LED type	LED array
Light distribution	Symmetric
Optical type	Spot
Beam angle (°)	16
Beam angle C90-270 (°)	16



Beam Angle:	16°		
h(m)	E(lx)	D(m)	
1	15089	0.27	
2	3772	0.55	
3	1677	0.82	
4	943	1.09	
5	604	1.36	

Luminous flux luminaire
1316 lm

Electrical

Current (mA)	500	Insulation class	III
Dimmable	Yes		
Driver	Remote excluded		
Driver type	Non Dimmable, Dimmable DALI 2, Dimmable, Dimmable Casambi, Dimmable 1-10V, Dimmable DALI 1, Mains Cut Dimming		
Emergency	Without		

Physical

Color	Gold	Rotation (°)	355
Orientation	Adjustable	Spot diameter (mm)	90
Recessed depth (mm)	111		
Weight (kg)	0.54		
Tilt (°)	35		

Light Shadow Pro Ø 90 Adjustable Optic Spot



Continuous current power supply, 0/1-10V dimmable, 220/240V – 50/60Hz, 300mA-16W / 350mA-18W / 400mA-21W / 500mA-27W / 600mA-32W / 650mA-35W / 700/750/800/900/950/1000/1050mA-36W
60.9439



Continuous current supply source 240V – 50/60Hz with dimmable DALI 2, push dimming. 300mA-16W / 350mA-18W / 400mA-21W / 500mA-27W / 600mA-32W / 650mA-35W
700/750/800/900/950/1000/1050mA-38W
60.9186



Continuous current power supply of 13-20W, 110/240V – 50/60Hz with power current selected through adjustable 300 mA – 15W / 350 mA – 18W / 400/450/500/550/600/650/700/750/800/850/900 mA – 15W. switch. 0/1-10V or push dimming
60.9188



Continuous current power supply of 12-20W, 110/240V – 50/60Hz with power current selected through adjustable 350mA – 17W / 400mA – 19W / 450 / 550 / 600 / 700mA – 20W regulable Dali 1 y Dali 2
60.9222



Continuous current power supply, Mains dimming, leading & trailing edge 220/240V – 50/60Hz, 300mA-14W / 350mA-17W / 400mA-19W / 450/500/600/650/700/750/800/900mA – 20W
60.9467



Continuous current power supply, dimmable Casambi 220/240V-50/60Hz, 300mA-16W / 350mA-18,5W / 400mA-21,5W / 450mA-24W / 500mA-27W / 600mA-32W / 650mA-35W / 700mA-36W / 750/800/900/950/1000/1050/1200mA – 38W
60.9207



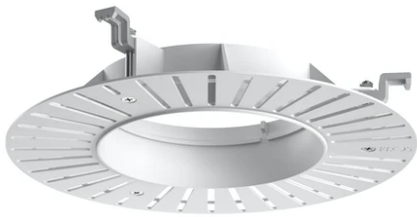
Continuous current power supply
220/240V – 50/60Hz. Adjustable Current
300mA-13W / 350mA-15W / 400mA-18W
/ 450mA-20W / 500mA-22W / 550mA-
24W / 600mA-27W / 650mA-29W /
700mA-31W / 750mA-32W / 800mA-33W
/ 850mA-35W / 900mA-38W / 950mA-
40W / 1000/1050mA-42W
60.9162



Installation Frame Trim
08.0165.14



Installation Frame Trim
08.0165.40



Installation Frame No Trim
08.0167.00