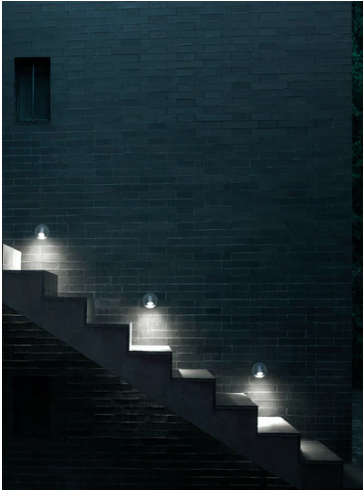


Wallstick

New

F010A20H006 - Grey



Wall-mounted outdoor footpath lights with LED light source and flared head that can be adjusted vertically 350°. The body is made of die-cast aluminium with low copper content.

Available in different finishes with a double layer of powder coating according to the QUALICOAT standard. The first layer of epoxy powder confers chemical and mechanical resistance. The second layer, a polyester powder finish, ensures resistance to UV rays and corrosive atmospheric agents. The painted surfaces are treated with alkaline and acid washes, rinsed with demineralized water, and subjected to chemical conversion treatment to protect against rust.

The anchoring hardware is made of AISI 316L stainless steel.

Diffuser in micro-textured glass to guarantee uniform light distribution on the ground.

The 24-V electrical power supply can be installed remotely. For easier installation, an optional box (sold separately) is available (3-module junction box, model 503).

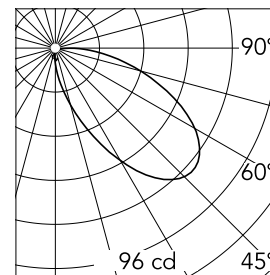
LED light source included. Head adjustable 350° on the vertical axis. Remote 24-V electrical power unit sold separately. Unit comes with two 200-mm-long outgoing power cables and a kit for IP-rated connection. The power supply may be installed remotely (installation box not necessary) or housed behind the unit with the optional installation box.

Main specifications

Lamp category	LED	Mountings	Wall
Power (W)	2.5	Environment	Outdoor wet location
CCT (K)	2700K		
CRI	80		
Net lumen (lm)	185		

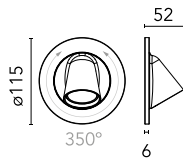
Optical

Lighting type	Direct
LED type	Power LED
Light distribution	Symmetric
Optical type	Flood
Beam angle (°)	52
Beam angle C90-270 (°)	52



Beam Angle:	52°		
	h(m)	E(lx)	D(m)
1	96	3.48	
2	24	6.95	
3	11	10.43	
4	6	13.90	
5	4	17.38	

Luminous flux luminaire
185 lm



Electrical

Frequency (Hz)	50-60	Emergency	Without
Voltage (V)	24	Insulation class	III
Dimmable	Yes		
Driver	Remote excluded		
Driver type	Dimmable DALI PWM, Dimmable 1-10 PWM		

Physical

Color	Grey
Orientation	Adjustable
Weight (kg)	0.3
Rotation (°)	350

Note

We recommend using a connection system with a degree of protection greater than or equal to the degree of protection of the luminaire.

During the installation and the maintenance of the fixtures it is important to be careful and avoid damages on the paint coating.

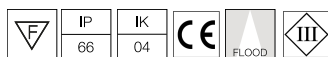
Damages on the coating exposed to outdoor conditions or water, could cause corrosion.

Chemical substances affect the anticorrosion covering protection.

For LED fixtures, there is evidence that most of the damages are connected to electrical effects related to the insulations, which cause destructive electrical discharges

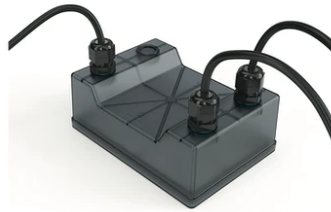
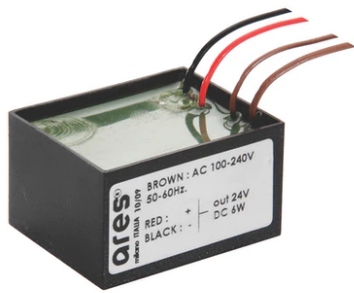
These effects are frequently caused by:

- over voltage coming from the mains' network where fixture is connected.
- electrostatic discharge (ESD) coming from the environment.



reduce the intensity of some of these phenomenon and prevent irreversible damages. The selection of the type of device to be used must be adjust on the electrical plant.

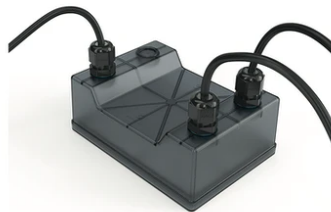
Wallstick



Power supply 24V 8W / 110-240V IP65
Class II selv. Non Dimmable
RF25748

Power supply 120/270Vac / 24Vdc.70W
Dimmable 1-10V PWM control. IP67
F990B04A000

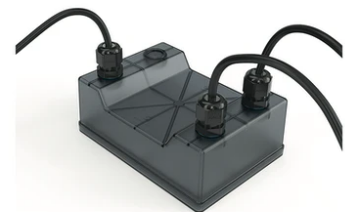
Power supply 24Vdc 50W / 120-240V
IP67 Class II selv. Non Dimmable
RF25755



Power supply 24Vdc 70W / 220-240V
IP67 Class II selv. Non Dimmable
RF25749

Power supply 120/270Vac / 24Vdc.70W
Dimmable DALI PWM control. IP67
F990B05A000

Power supply 24V 10W / 110-240V IP67
Class II selv._Non Dimmable
RF25757



Power supply 120/270Vac / 24Vdc.35W
Dimmable DALI PWM control. IP67
F990B03A000

Power supply 24V 10W /110-240V IP20
Class II selv. Non Dimmable
RF25747

DALI PWM control interface 24Vdc
120W. IP67. Power supply not included
F990B01A000



1-10V PWM control interface 24Vdc
120W. IP67. Power supply not included.
F990B00A000



2 way terminal block 2 poles IP68 H2O
stop. ($\varnothing 4 \pm 6,9$ mm cable)
F990C050000



Recessed 3-module junction box
(model 503)
F990H010000



Power supply 120/270Vac / 24Vdc.35W
Dimmable 1-10V PWM control. IP67
F990B02A000



Power supply 24V 8W / 110-240V IP20
Class II selv._Non Dimmable
RF25754