

Walkstick Pipe 2 H 930 mm Dimmable 1-10V

□ F010J31B001 - White

Collection of outdoor poles with LED light source and tubular head that can be adjusted 350° on the vertical and horizontal axes. Available in two different heights.

The stem and head are made of extruded aluminium; the base is made of die-cast aluminium with low copper content.

Available in different finishes with a double layer of powder coating according to the QUALICOAT standard. The first layer of epoxy powder confers chemical and mechanical resistance. The second layer, a polyester powder finish, ensures resistance to UV rays and corrosive atmospheric agents. The painted surfaces are treated with alkaline and acid washes, rinsed with demineralized water, and subjected to chemical conversion treatment to protect against rust.

The anchoring hardware is made of AISI 316L stainless steel.

Diffuser made of acid-etched glass to guarantee a uniform wash of light on the ground.

The unit is supplied with a length of neoprene cable.

The unit may be easily installed on any flooring on the ground with anchors, or with the dedicated installation box to completely integrate the base of the product with the pavement.

220-240V power supply included. Ready for installation on solid surface. Box for ground installation to be ordered separately.

Included 2 way terminal block 4 poles IP68 H2O Stop.

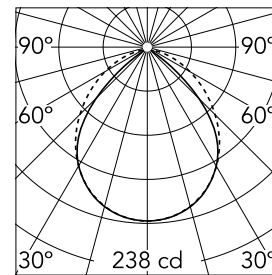
Version 110V upon request.

Main specifications

Lamp category	LED	Mountings	Ground
Power (W)	7	Environment	Outdoor wet location
CCT (K)	3000K		
CRI	80		
Net lumen (lm)	448		

Optical

Lighting type	Direct
LED type	Power LED
Light distribution	Asymmetric
Optical type	Diffused light
Beam angle (°)	97
Beam angle C90-270 (°)	97



Beam Angle:	87°	
h(m)	E(lx)	D(m)
1	238	1.90
2	60	3.80
3	26	5.69
4	15	7.59
5	10	9.49

Luminous flux luminaire
496 lm

Electrical

Frequency (Hz)	50-60	Emergency	Without
Voltage (V)	220-240	Insulation class	II
Dimmable	Yes		
Driver	Integrated		
Driver type	Dimmable 1-10V		

Physical

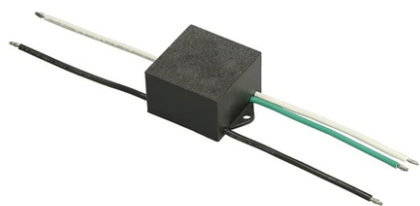
Color	White
Orientation	Adjustable
Weight (kg)	1.70

Note

Ready for installation on solid surface. Box for ground installation to be ordered separately. Included 2 way terminal block 4 poles IP68 H2O Stop. Version 110V upon request.



Walkstick Pipe 2 H 930 mm Dimmable 1-10V



S.P.D. (SURGE PROTECTION DEVICE)
F990E00A000



Box for ground installation
F001Z020000