

Walkstick 2 Double Dimmable 1-10V

New

■ F010C42B018 - Deep Brown

Collection of outdoor poles with LED light source and tubular head that can be adjusted vertically 350°. Available in two different heights combined with the one- or two-light version.

The stem is made of extruded aluminium; the base and head are made of EN AB-47100 die-cast aluminium with low copper content.

Available in different finishes with a double layer of powder coating according to the QUALICOAT standard. The first layer of epoxy powder confers chemical and mechanical resistance. The second layer, a polyester powder finish, ensures resistance to UV rays and corrosive atmospheric agents. The painted surfaces are treated with alkaline and acid washes, rinsed with demineralized water, and subjected to chemical conversion treatment to protect against rust.

The anchoring hardware is made of AISI 316L stainless steel.

Diffuser in micro-textured glass to guarantee uniform light distribution on the ground.

The unit may be easily installed on any flooring on the ground with anchors, or with the dedicated installation box to completely integrate the base of the product with the pavement.

LED light source included. Head adjustable 350° on both the vertical and horizontal axes. Integrated 220-240 V ON/OFF electrical power. Equipped with a length of neoprene cable and an IP68 2-way anti-condensation H2O stop seal system. Box for ground installation sold separately.

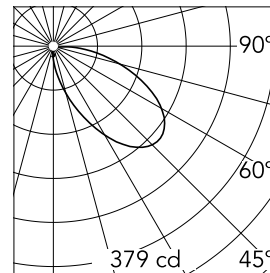
110V version by request.

Main specifications

| | | | |
|-----------------------|---------|--------------------|----------------------|
| Lamp category | LED | Mountings | Ground |
| Power (W) | 8.5 | Environment | Outdoor wet location |
| CCT (K) | 4000K | | |
| CRI | 80 | | |
| Net lumen (lm) | 382+212 | | |

Optical

| | |
|-------------------------------|-----------|
| Lighting type | Direct |
| LED type | Power LED |
| Light distribution | Symmetric |
| Optical type | Flood |
| Beam angle (°) | 54 |
| Beam angle C90-270 (°) | 54 |



Beam Angle: 54°

| h(m) | E(lx) | D(m) |
|------|-------|-------|
| 1 | 379 | 3.71 |
| 2 | 95 | 7.42 |
| 3 | 42 | 11.13 |
| 4 | 24 | 14.84 |
| 5 | 15 | 18.55 |

Luminous flux luminaire
382 lm

Electrical

| | | | |
|-----------------------|----------------|-------------------------|---------|
| Frequency (Hz) | 50-60 | Emergency | Without |
| Voltage (V) | 220-240 | Insulation class | II |
| Dimmable | Yes | | |
| Driver | Integrated | | |
| Driver type | Dimmable 1-10V | | |

Physical

| | |
|---------------------|------------|
| Color | Deep Brown |
| Orientation | Adjustable |
| Weight (kg) | 1.9 |
| Rotation (°) | 350 |

Note

We recommend using a connection system with a degree of protection greater than or equal to the degree of protection of the luminaire.

During the installation and the maintenance of the fixtures it is important to be careful and avoid damages on the paint coating.

Damages on the coating exposed to outdoor conditions or water, could cause corrosion.

Chemical substances affect the anticorrosion covering protection.

For LED fixtures, there is evidence that most of the damages are connected to electrical effects related to the insulations, which cause destructive electrical discharges

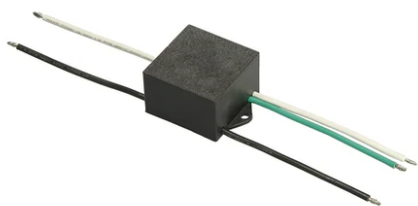
These effects are frequently caused by:

- over voltage coming from the mains' network where fixture is connected.
- electrostatic discharge (ESD) coming from the environment.

The use of a protective device against the overvoltage on the electrical installation is warmly suggest this helps to



Walkstick 2 Double Dimmable 1-10V



S.P.D. (SURGE PROTECTION DEVICE)
F990E00A000



Box for ground installation
F001Z020000