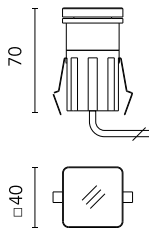
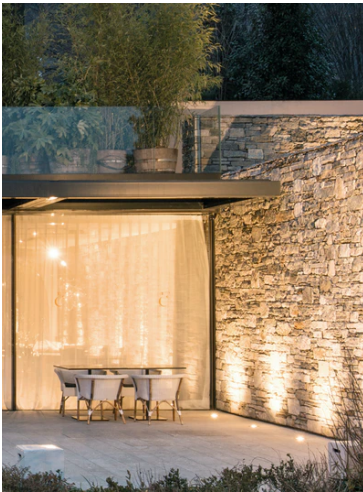


Tapioca Square 40x40 mm No Trim

100181133



Square or round luminaire – for installation in wall, ceiling or ground – recessed.

Configuration: die-cast aluminium structure, EN AB-47100 alloy (low copper content). Anodized aluminium frame – only round. Glass diffuser: transparent or sandblasted, fixed to the aluminium body through a robotic gluing system.

Double layer coating for high resistance to corrosion: the aluminium components are painted with a double coat using powders which are compliant with QUALICOAT standards: a first layer of epoxy powder (with excellent chemical and mechanical resistance) and a second finishing layer of polyester powder (resistant to UV rays and atmospheric agents). The entire painting process of the aluminium fitting starts from components which have been sandblasted in advance to make the surface more porous and increase the adherence of the paint. Ares effects alkaline and acid washing to clean the surfaces completely, then rinses with demineralised water to remove any residue particles, subsequently a chemical conversion treatment is done to protect against rusting.

Protection rating: IP67

In compliance with EN 60598-1 standards

Class of insulation: III

Installation: the luminaire is equipped with a piece of cable for an easy-to-make connection and an H2O stop device. Tapioca 24V is equipped with a dc/dc highly efficient resin-coated converter that removes electromagnetic interference and allows parallel wiring. The luminaire is protected against polarity reversal and sudden voltage peak. Installation requires a dedicated box to be ordered separately. It is important to provide a >200mm gravel layer or a drain system (for concrete surface) to ensure good drainage and to avoid water stagnation.

We recommend the use of a connection system with a protection degree greater than or equal to the protection degree of the luminaire.

During the installation and the maintenance of the fixtures it is important to be careful and avoid damages on the paint coating.

Damages on the coating exposed to outdoor conditions or water, could cause corrosion.

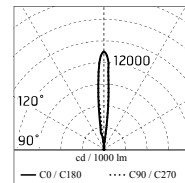
Chemical substances affect the anticorrosion covering protection.

Main specifications

Power (W)	1.6	Mountings	Ceiling, Ground, Wall surface
System power (W)	2.3	Environment	Outdoor wet location
CCT (K)	2700K		
CRI	80		
Net lumen (lm)	118		

Optical

Lighting type	Direct
LED type	Power LED
Light distribution	Symmetric
Optical type	Spot



m	lux	
	Max	Med
5.00	77	51
4.00	121	80
3.00	214	141
2.00	482	318
1.00	1928	1273

$\alpha = 6.0^\circ + 6.0^\circ$ $\beta = 6.0^\circ + 6.0^\circ$

Electrical

Frequency (Hz)	50-60	Insulation class	III
Voltage (V)	12-24		
Dimmable	No		
Driver type	Non Dimmable		
Emergency	Without		

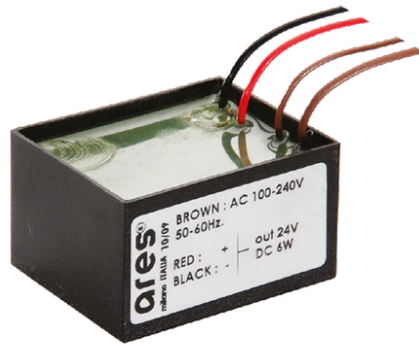
Note

Dimmable version on request

Tapioca Square 40x40 mm No Trim



Power Supply 10W 110+240Vac/24Vdc
Ip20
87



Power Supply 100+240Vac/ 8W at
24Vdc/ 6W at 350mA Ip65
106



2 Way Terminal Block 2 Poles Ip68 H2O
Stop
269



Power Supply 20W 220+240V/24Vdc
Ip67
147



Power Supply 10W 110+240Vac/24Vdc
Ip67
175



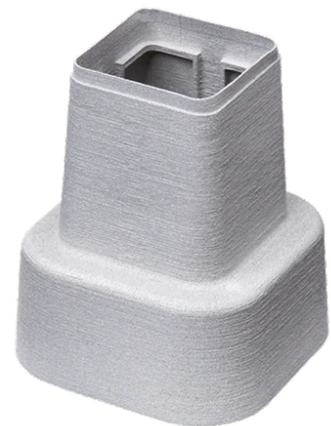
Power Supply 70W 220+240V/24Vdc
Ip67
110



Power Supply 50W 120+240V/24Vdc
Ip67
155



Power Supply 8W 100+240Vac/24Vdc
350mA Ip20
150



Box for Installation Tapioca Square
40X40
99