

## Perseo 30 Symmetric Optic Dimmable 1-10V

■ 525133-310.A.18 - Deep Brown



Adjustable projector for installation on wall or on pole.

Configuration: die-cast aluminium structure. EN AB-47100 alloy (low copper content). Glass diffuser: extra-clear, fixed to the frame through a robotic gluing system. Graduated stainless steel fixing plate for a precise adjustment.

Double layer coating for high resistance to corrosion: the aluminium components are painted with a double coat using powders which are compliant with QUALICOAT standards: a first layer of epoxy powder (with excellent chemical and mechanical resistance) and a second finishing layer of polyester powder (resistant to UV rays and atmospheric agents). The entire painting process of the aluminium fitting starts from components which have been sand-blasted in advance to make the surface more porous and increase the adherence of the paint. Areas effects alkaline and acid washing to clean the surfaces completely, then rinses with demineralised water to remove any residue particles, subsequently a chemical conversion treatment is done to protect against rusting.

Protection rating: IP65

In compliance with EN60598-1 standards

Class of insulation: I

Installation: wiring through an M20x1.5 metal cable gland (7mm <math>\phi</math> <math>\leq</math> 13mm cables). Outdoor use requires suitable flexible cables assuring the watertightness of the cable gland.

During the installation and the maintenance of the fixtures it is important to be careful and avoid damages on the paint coating.

Damages on the coating exposed to outdoor conditions or water, could cause corrosion.

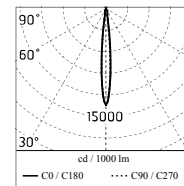
Chemical substances affect the anticorrosion covering protection.

### Main specifications

<b>Power (W)</b>	48	<b>Mountings</b>	Pole, Wall surface, Floor
<b>System power (W)</b>	53	<b>Environment</b>	Outdoor wet location
<b>CCT (K)</b>	3000K		
<b>CRI</b>	80		
<b>Net lumen (lm)</b>	4332		

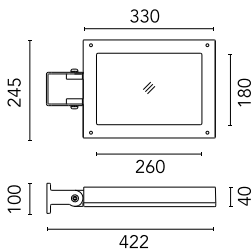
### Optical

<b>Lighting type</b>	Direct
<b>LED type</b>	Power LED
<b>Light distribution</b>	Symmetric
<b>Optical type</b>	Spot



m	lux Max	lux Med
1.00	61198	39000
2.00	15299	9750
3.00	6800	4333
4.00	3825	2438
5.00	2448	1560

$\alpha = 5.5^\circ + 5.5^\circ$        $\beta = 5.5^\circ + 5.5^\circ$



### Electrical

<b>Frequency (Hz)</b>	50-60	<b>Insulation class</b>	I
<b>Voltage (V)</b>	220-240		
<b>Dimmable</b>	Yes		
<b>Driver type</b>	Dimmable 1-10V		
<b>Emergency</b>	Without		

### Physical

<b>Color</b>	Deep Brown
--------------	------------

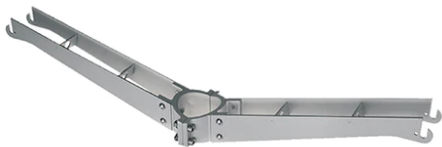
# Perseo 30 Symmetric Optic Dimmable 1-10V



Pole Bracket Franco/Perseo 30 Ø 60 mm 180 mm Double  
93.18

Pole Bracket Franco/Perseo 30 Ø 102 mm 180 mm Double  
90.18

Pole Bracket Franco/Perseo 30 Ø 102 mm 180 mm Double  
78.18



Pole Bracket Franco/Perseo 30 Ø 102 mm 500 mm Double  
89.18

Pole Bracket Franco/Perseo 30 Ø 102 mm 500 mm Single  
79.18

Pole Franco/Perseo/Dooku h 4500(+500 mm Inground) mm Ø76 mm  
251.6



Pole Ø 102 mm h 5000(+500 mm Inground) mm  
4155.6

Pole Bracket Franco/Perseo 30 Ø 60 mm 180 mm Double  
95.18

Pole Ø 102 mm h 4000 mm With Base  
4140.6



Pole Bracket Franco/Perseo 30 Ø 76 mm 500 mm Double  
115.18



Base Plate and Fixing Bolts for Pole Ø 102 mm h 4000/5000 mm with Base  
116



Pole Franco/Perseo/Dooku h 3500(+500 mm Inground) mm Ø76 mm  
250.6



Pole Bracket Franco/Perseo 30 Ø 76 mm 500 mm Single  
113.18



Pole Franco/Perseo/Dooku h 4500(with Base) mm Ø76 mm  
249.6



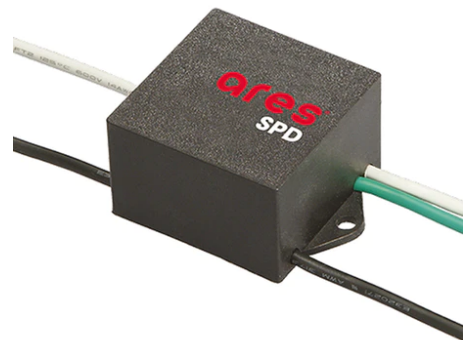
Pole Bracket Franco/Perseo 30 Ø 76 mm 180 mm Double  
114.18



Pole Franco/Perseo/Dooku h 4500(with Base) mm Ø76 mm  
249.3



Pole Bracket Franco/Perseo 30 Ø 76 mm 180 mm Single  
112.18



SPD (Surge Protection Device)  
237



Pole Franco/Perseo/Dooku h 4500(+500 mm Inground) mm Ø76 mm  
251.3



Pole Bracket Franco/Perseo 30 Ø 60 mm 500 mm Double  
96.18



Pole Bracket Franco/Perseo 30 Ø 102 mm 180 mm Double  
94.18



Pole Franco/Perseo/Dooku h 3500(with Base) mm Ø76 mm  
248.6



Pole Ø 102 mm h 4000(+500 mm In-ground) mm  
4145.6



Pole Ø 102 mm h 5000 mm With Base  
4150.6



Wall Bracket Perseo 30 1000 mm  
181.18



Pole Ø 102 mm h 4000(+500 mm In-ground) mm  
4145.3



Pole Ø 102 mm h 4000 mm With Base  
4140.3



---

Pole Franco/Perseo/Dooku h 3500(with Base) mm Ø76 mm  
248.3



---

Pole Ø 102 mm h 5000(+500 mm In-ground) mm  
4155.3



---

Pole Ø 102 mm h 5000 mm With Base



---

Wall Washer Visor Perseo 30  
167.4



---

Pole Franco/Perseo/Dooku h 3500(+500 mm Inground) mm Ø76 mm  
250.3



---

Antivandal Louvre Perseo 30  
168.4