

Perseo 30 Symmetric Optic

■ 525160.A.4 - Black

Adjustable projector for installation on wall or on pole.

Configuration: die-cast aluminium structure. EN AB-47100 alloy (low copper content). Glass diffuser: extra-clear, fixed to the frame through a robotic gluing system. Graduated stainless steel fixing plate for a precise adjustment.

Double layer coating for high resistance to corrosion: the aluminium components are painted with a double coat using powders which are compliant with QUALICOAT standards: a first layer of epoxy powder (with excellent chemical and mechanical resistance) and a second finishing layer of polyester powder (resistant to UV rays and atmospheric agents). The entire painting process of the aluminium fitting starts from components which have been sand-blasted in advance to make the surface more porous and increase the adherence of the paint. Ares effects alkaline and acid washing to clean the surfaces completely, then rinses with demineralised water to remove any residue particles, subsequently a chemical conversion treatment is done to protect against rusting.

Protection rating: IP65

In compliance with EN60598-1 standards

Class of insulation: I

Installation: wiring through an M20x1.5 metal cable gland (7mm<ø<13mm cables). Outdoor use requires suitable flexible cables assuring the watertightness of the cable gland.

During the installation and the maintenance of the fixtures it is important to be careful and avoid damages on the paint coating.

Damages on the coating exposed to outdoor conditions or water, could cause corrosion.

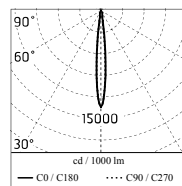
Chemical substances affect the anticorrosion covering protection.

Main specifications

Power (W)	48	Mountings	Pole, Wall surface, Floor
System power (W)	53	Environment	Outdoor wet location
CCT (K)	2700K		
CRI	80		
Net lumen (lm)	3989		

Optical

Lighting type	Direct
LED type	Power LED
Light distribution	Symmetric
Optical type	Spot



m	lux Max	lux Med
1.00	61198	39000
2.00	15299	9750
3.00	6800	4333
4.00	3825	2438
5.00	2448	1560

Electrical

Frequency (Hz)	50-60	Insulation class	I
Voltage (V)	220-240		
Dimmable	No		
Driver type	Non Dimmable		
Emergency	Without		

Physical

Color	Black
--------------	-------

Perseo 30 Symmetric Optic



SPD (Surge Protection Device)
237



Pole Bracket Franco/Perseo 30 Ø 76
mm 180 mm Double
114.4



Pole Franco/Perseo/Dooku h 4500(+500
mm Inground) mm Ø76 mm
251.6



Pole Ø 102 mm h 5000(+500 mm In-
ground) mm
4155.6



Base Plate and Fixing Bolts for Pole Ø
102 mm h 4000/5000 mm with Base
116



Pole Franco/Perseo/Dooku h 4500(with
Base) mm Ø76 mm
249.3



Pole Bracket Franco/Perseo 30 Ø 60
mm 180 mm Double
93.4



Pole Bracket Franco/Perseo 30 Ø 102
mm 500 mm Single
79.4



Pole Franco/Perseo/Dooku h 3500(with
Base) mm Ø76 mm
248.3



Pole Ø 102 mm h 4000 mm With Base
4140.6



Pole Franco/Perseo/Dooku h 4500(with
Base) mm Ø76 mm
249.6



Pole Ø 102 mm h 4000 mm With Base
4140.3



Pole Bracket Franco/Perseo 30 Ø 102
mm 180 mm Double
78.4



Pole Ø 102 mm h 4000(+500 mm In-
ground) mm
4145.6



Pole Bracket Franco/Perseo 30 Ø 102
mm 180 mm Double
90.4



Pole Bracket Franco/Perseo 30 Ø 102
mm 500 mm Double
89.4



Pole Franco/Perseo/Dooku h 4500(+500
mm In-ground) mm Ø76 mm
251.3



Wall Bracket/Pole 300 mm Perseo 4
181.4



Pole Ø 102 mm h 5000 mm With Base
4150.3



Pole Bracket Franco/Perseo 30 Ø 76
mm 500 mm Double
115.4



Wall Washer Visor Perseo 30
167.4



Antivandal Louvre Perseo 30
168.4



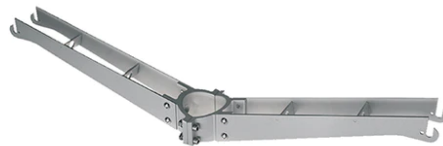
Pole Ø 102 mm h 4000(+500 mm In-
ground) mm
4145.3



Pole Franco/Perseo/Dooku h 3500(with
Base) mm Ø76 mm
248.6



Pole Bracket Franco/Perseo 30 Ø 76
mm 500 mm Single
113.4



Pole Bracket Franco/Perseo 30 Ø 60
mm 500 mm Double
96.4



Pole Bracket Franco/Perseo 30 Ø 76
mm 180 mm Single
112.4



Pole Franco/Perseo/Dooku h 3500(+500
mm Inground) mm Ø76 mm
250.3



Pole Ø 102 mm h 5000 mm With Base



Pole Ø 102 mm h 5000(+500 mm In-
ground) mm
4155.3



Pole Bracket Franco/Perseo 30 Ø 60
mm 180 mm Double
95.4



Pole Bracket Franco/Perseo 30 Ø 102
mm 180 mm Double
94.4



Pole Franco/Perseo/Dooku h 3500(+500
mm Inground) mm Ø76 mm
250.6