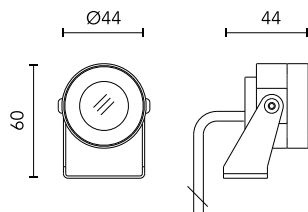


## Mini Martina 500mA

10517100.8 - Anodized Aluminium



Adjustable spotlight.

Configuration: turned and anodized (raw or painted) aluminium structure with stainless steel adjustable bracket.

Glass diffuser: transparent or sandblasted with silkscreen border, fixed through a robotic gluing system.

Double layer coating for high resistance to corrosion: the aluminium components are painted with a double coat using powders which are compliant with QUALICOAT standards: a first layer of epoxy powder (with excellent chemical and mechanical resistance) and a second finishing layer of polyester powder (resistant to UV rays and atmospheric agents). The entire painting process of the aluminium fitting starts from components which have been sand-blasted in advance to make the surface more porous and increase the adherence of the paint. Ares effects alkaline and acid washing to clean the surfaces completely, then rinses with demineralised water to remove any residue particles, subsequently a chemical conversion treatment is done to protect against rusting.

Protection rating: IP67

In compliance with EN60598-1 standards

Class of insulation: III

Installation: the luminaire is equipped with 2000mm cable. Martina 24V and Maxi Martina 24V are equipped with a dc/dc highly efficient resin-coated converter that removes electromagnetic interference and protects against polarity reversal and sudden voltage peak. Parallel wiring required. Mini Martina, Martina RGB and Maxi Martina RGB requires connection in series.

We recommend the use of a connection system with a protection degree greater than or equal to the protection degree of the luminaire.

During the installation and the maintenance of the fixtures it is important to be careful and avoid damages on the paint coating.

Damages on the coating exposed to outdoor conditions or water, could cause corrosion.

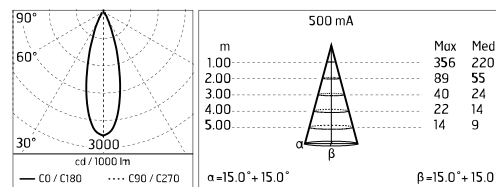
Chemical substances affect the anticorrosion covering protection.

### Main specifications

<b>Power (W)</b>	1.6	<b>Mountings</b>	Ceiling, Ground, Wall surface
<b>System power (W)</b>	1.6	<b>Environment</b>	Outdoor
<b>CCT (K)</b>	4000K		
<b>CRI</b>	80		
<b>Net lumen (lm)</b>	129		

### Optical

<b>Lighting type</b>	Direct
<b>LED type</b>	Power LED
<b>Light distribution</b>	Symmetric
<b>Optical type</b>	Medium



### Electrical

<b>Frequency (Hz)</b>	50-60	<b>Insulation class</b>	III
<b>Voltage (V)</b>	500MA		
<b>Dimmable</b>	No		
<b>Driver type</b>	Not dimmable		
<b>Emergency</b>	Without		

### Physical

<b>Color</b>	Anodized Aluminium
--------------	--------------------

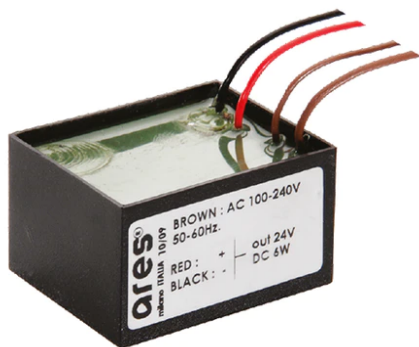
Mini Martina 500mA



Visor for Mini Martina  
52.4

Ground Spike Martina/Mini  
Martina/Perseo 9/Iota  
136

Power Supply 8W 100÷240Vac/24Vdc  
350mA Ip20  
150



Power Supply 100÷240Vac/ 8W at  
24Vdc/ 6W at 350mA Ip65  
106

Power Supply 10W 100÷265Vac/350 mA  
Ip40  
68

Power Supply 16x1W 110÷240Vac/350  
mA Dimmable push-dimm/1-10V Ip20  
129



Power Supply 16X1W 110÷240V/350mA  
Ip67  
184

Power Supply 13x2W 110÷240Vac/500  
mA Dimmable push-dimm/1-10V Ip20  
135

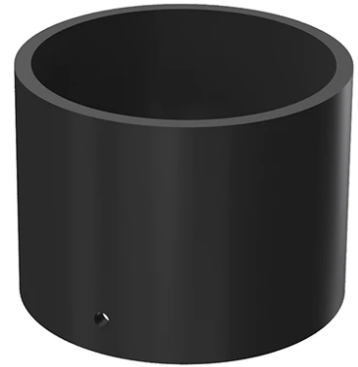
Power Supply 13X2W 110÷240V/500mA  
Ip67  
218



Power Supply Dali 20W  
110÷240V/350mA Ip67  
238



Power Supply Dali 20W  
110÷240V/500mA Ip67  
239



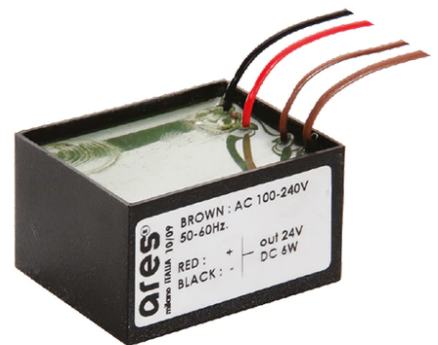
Visor for Mini Martina  
52.4



Ground Spike Martina/Mini  
Martina/Perseo 9/Iota  
136



Power Supply 8W 100÷240Vac/24Vdc  
350mA Ip20  
150



Power Supply 100÷240Vac/ 8W at  
24Vdc/ 6W at 350mA Ip65  
106



Power Supply 10W 100÷265Vac/350 mA  
Ip40  
68



Power Supply 16x1W 110÷240Vac/350  
mA Dimmable push-dimm/1-10V Ip20  
129



Power Supply 16X1W 110÷240V/350mA  
Ip67  
184




---

Power Supply 13x2W 110÷240Vac/500  
mA Dimmable push-dimm/1-10V Ip20  
135




---

Power Supply 13X2W 110÷240V/500mA  
Ip67  
218




---

Power Supply Dali 20W  
110÷240V/350mA Ip67  
238




---

Power Supply Dali 20W  
110÷240V/500mA Ip67  
239