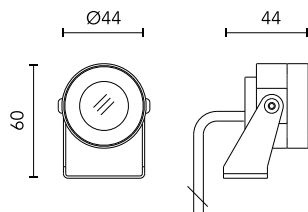


Mini Martina 500mA

■ 10514422.8 - Anodized Aluminium



Adjustable spotlight.

Configuration: turned and anodized (raw or painted) aluminium structure with stainless steel adjustable bracket.

Glass diffuser: transparent or sandblasted with silkscreen border, fixed through a robotic gluing system.

Double layer coating for high resistance to corrosion: the aluminium components are painted with a double coat using powders which are compliant with QUALICOAT standards: a first layer of epoxy powder (with excellent chemical and mechanical resistance) and a second finishing layer of polyester powder (resistant to UV rays and atmospheric agents). The entire painting process of the aluminium fitting starts from components which have been sand-blasted in advance to make the surface more porous and increase the adherence of the paint. Ares effects alkaline and acid washing to clean the surfaces completely, then rinses with demineralised water to remove any residue particles, subsequently a chemical conversion treatment is done to protect against rusting.

Protection rating: IP67

In compliance with EN60598-1 standards

Class of insulation: III

Installation: the luminaire is equipped with 2000mm cable. Martina 24V and Maxi Martina 24V are equipped with a dc/dc highly efficient resin-coated converter that removes electromagnetic interference and protects against polarity reversal and sudden voltage peak. Parallel wiring required. Mini Martina, Martina RGB and Maxi Martina RGB requires connection in series.

We recommend the use of a connection system with a protection degree greater than or equal to the protection degree of the luminaire.

During the installation and the maintenance of the fixtures it is important to be careful and avoid damages on the paint coating.

Damages on the coating exposed to outdoor conditions or water, could cause corrosion.

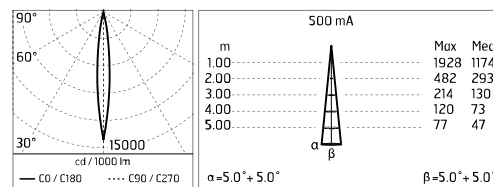
Chemical substances affect the anticorrosion covering protection.

Main specifications

Power (W)	1.6	Mountings	Ceiling, Ground, Wall surface
System power (W)	1.6	Environment	Outdoor
CCT (K)	2700K		
CRI	80		
Net lumen (lm)	118		

Optical

Lighting type	Direct
LED type	Power LED
Light distribution	Symmetric
Optical type	Spot



Electrical

Frequency (Hz)	50-60	Insulation class	III
Voltage (V)	500MA		
Dimmable	No		
Driver type	Not dimmable		
Emergency	Without		

Physical

Color	Anodized Aluminium
--------------	--------------------

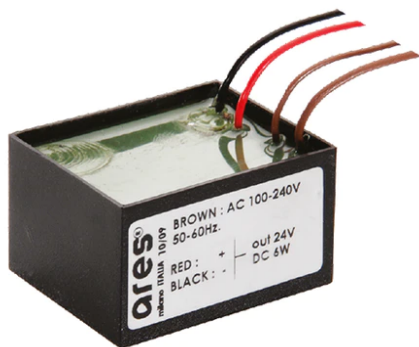
Mini Martina 500mA



Visor for Mini Martina
52.4

Ground Spike Martina/Mini
Martina/Perseo 9/Iota
136

Power Supply 8W 100÷240Vac/24Vdc
350mA Ip20
150



Power Supply 100÷240Vac/ 8W at
24Vdc/ 6W at 350mA Ip65
106

Power Supply 10W 100÷265Vac/350 mA
Ip40
68

Power Supply 16x1W 110÷240Vac/350
mA Dimmable push-dimm/1-10V Ip20
129



Power Supply 16X1W 110÷240V/350mA
Ip67
186

Power Supply 13x2W 110÷240Vac/500
mA Dimmable push-dimm/1-10V Ip20
135

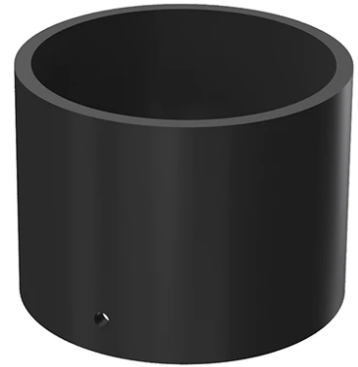
Power Supply 13X2W 110÷240V/500mA
Ip67
218



Power Supply Dali 20W
110÷240V/350mA Ip67
238



Power Supply Dali 20W
110÷240V/500mA Ip67
239



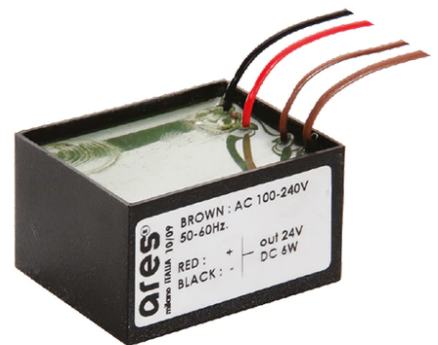
Visor for Mini Martina
52.4



Ground Spike Martina/Mini
Martina/Perseo 9/Iota
136



Power Supply 8W 100÷240Vac/24Vdc
350mA Ip20
150



Power Supply 100÷240Vac/ 8W at
24Vdc/ 6W at 350mA Ip65
106



Power Supply 10W 100÷265Vac/350 mA
Ip40
68



Power Supply 16x1W 110÷240Vac/350
mA Dimmable push-dimm/1-10V Ip20
129



Power Supply 16X1W 110÷240V/350mA
Ip67
184



Power Supply 13x2W 110÷240Vac/500
mA Dimmable push-dimm/1-10V Ip20
135



Power Supply 13X2W 110÷240V/500mA
Ip67
218



Power Supply Dali 20W
110÷240V/350mA Ip67
238



Power Supply Dali 20W
110÷240V/500mA Ip67
239