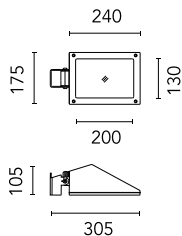


Mini Franco Symmetric Optic Cob Led

■ 1628013.4 - Black



Luminaire for installation on wall or on pole.

Configuration: die-cast aluminium structure, EN AB-47100 alloy (low copper content) and pure aluminium reflector. Glass diffuser: extra-clear.

Double layer coating for high resistance to corrosion: the aluminium components are painted with a double coat using powders which are compliant with QUALICOAT standards: a first layer of epoxy powder (with excellent chemical and mechanical resistance) and a second finishing layer of polyester powder (resistant to UV rays and atmospheric agents). The entire painting process of the aluminium fitting starts from components which have been sand-blasted in advance to make the surface more porous and increase the adherence of the paint. Ares effects alkaline and acid washing to clean the surfaces completely, then rinses with demineralised water to remove any residue particles, subsequently a chemical conversion treatment is done to protect against rusting.

Protection rating: IP65

In compliance with EN60598-1 standards

Class of insulation: I

Installation: wiring through a M16x1,5 metal cable gland (4,5mm ϕ <math><10\text{mm}</math> cables). Outdoor use requires suitable flexible cables assuring the watertightness of the cable gland. CoB LED version is supplied with a 2-way terminal block for 3-conductor cables – IP68.

During the installation and the maintenance of the fixtures it is important to be careful and avoid damages on the paint coating.

Damages on the coating exposed to outdoor conditions or water, could cause corrosion.

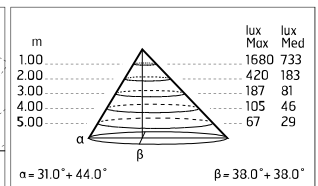
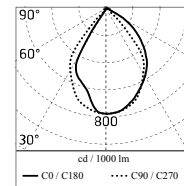
Chemical substances affect the anticorrosion covering protection.

Main specifications

Power (W)	22	Mountings	Pole, Wall surface, Floor
System power (W)	24	Environment	Outdoor
CCT (K)	4000K		
CRI	80		
Net lumen (lm)	2166		

Optical

Lighting type	Direct
LED type	LED array
Light distribution	Symmetric
Optical type	Wide flood



Electrical

Frequency (Hz)	50-60	Insulation class	I
Voltage (V)	220-240		
Dimmable	No		
Driver type	Not dimmable		
Emergency	Without		

Physical

Color	Black
--------------	-------

Mini Franco Symmetric Optic Cob Led



Pole Bracket Minifranco/Perseo 16 Ø
102 mm 180 mm Single
221.4

Pole Bracket Minifranco/Perseo 16 Ø
102 mm 180 mm Double
222.4

Pole Bracket Minifranco/Perseo 16 Ø
102 mm 500 mm Single
223.4



Pole Bracket Minifranco/Perseo 16 Ø
102 mm 500 mm Double
224.4

Pole Bracket Minifranco/Perseo 16 Ø
60 mm 180 mm Single
225.4

Pole Bracket Minifranco/Perseo 16 Ø
60 mm 180 mm Double
226.4



Pole Bracket Minifranco/Perseo 16 Ø
60 mm 500 mm Single
227.4

Pole Bracket Minifranco/Perseo 16 Ø
60 mm 500 mm Double
228.4

Pole Bracket Minifranco/Perseo 16 Ø
76 mm 180 mm Single
229.4



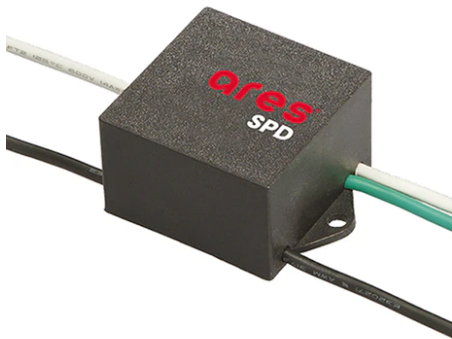
Pole Bracket Minifranco/Perseo 16 Ø
76 mm 180 mm Double
230.4



Pole Bracket Minifranco/Perseo 16 Ø
76 mm 500 mm Single
231.4



Pole Bracket Minifranco/Perseo 16 Ø
76 mm 500 mm Double
232.4



SPD (Surge Protection Device)
237



Wall Bracket 620 mm
Minifranco/Perseo 16
88.4



Pole Mini Franco h 2000(with Base) mm
Ø60 mm
117.4



Pole Franco/Perseo/Dooku h 3500(with
Base) mm Ø76 mm
248.3



Pole Franco/Perseo/Dooku h 3500(with
Base) mm Ø76 mm
248.6



Pole Franco/Perseo/Dooku h 4500(with
Base) mm Ø76 mm
249.3



Pole Franco/Perseo/Dooku h 4500(with Base) mm Ø76 mm
249.6



Pole Franco/Perseo/Dooku h 3500(+500 mm Inground) mm Ø76 mm
250.3



Pole Franco/Perseo/Dooku h 3500(+500 mm Inground) mm Ø76 mm
250.6



Pole Franco/Perseo/Dooku h 4500(+500 mm Inground) mm Ø76 mm
251.3



Pole Franco/Perseo/Dooku h 4500(+500 mm Inground) mm Ø76 mm
251.6



Pole Mini Franco h 500(with Base) mm Ø60 mm
1005.4



Pole Mini Franco h 900(with Base) mm Ø60 mm
1009.4



Pole Mini Franco h 500(+300 mm Inground) mm Ø60 mm
1105.4



Pole Mini Franco h 900(+300 mm Inground) mm Ø60 mm
1109.4



Pole Ø 102 mm h 4000 mm With Base



Pole Ø 102 mm h 4000 mm With Base



Pole Ø 102 mm h 4000(+500 mm In-ground) mm
4145.3



Pole Ø 102 mm h 4000(+500 mm In-ground) mm
4145.6



Pole Ø 102 mm h 5000 mm With Base
4150.3



Pole Ø 102 mm h 5000 mm With Base
4150.6



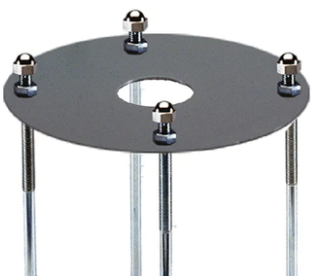
Pole Ø 102 mm h 5000(+500 mm In-ground) mm
4155.3



Pole Ø 102 mm h 5000(+500 mm In-ground) mm
4155.6



Base Plate and Fixing Bolts for Pole Ø 102 mm h 4000/5000 mm with Base
116





Base Plate and Fixing Bolts Mini
Franco
243