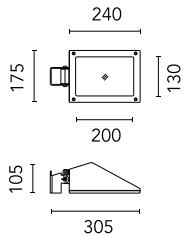


## Mini Franco Asymmetric Optic Cob Led

■ 1628014.4 - Black



Luminaire for installation on wall or on pole.

Configuration: die-cast aluminium structure, EN AB-47100 alloy (low copper content) and pure aluminium reflector. Glass diffuser: extra-clear.

Double layer coating for high resistance to corrosion: the aluminium components are painted with a double coat using powders which are compliant with QUALICOAT standards: a first layer of epoxy powder (with excellent chemical and mechanical resistance) and a second finishing layer of polyester powder (resistant to UV rays and atmospheric agents). The entire painting process of the aluminium fitting starts from components which have been sand-blasted in advance to make the surface more porous and increase the adherence of the paint. Ares effects alkaline and acid washing to clean the surfaces completely, then rinses with demineralised water to remove any residue particles, subsequently a chemical conversion treatment is done to protect against rusting.

Protection rating: IP65

In compliance with EN60598-1 standards

Class of insulation: I

Installation: wiring through a M16x1,5 metal cable gland (4,5mm<math>\phi</math>10mm cables). Outdoor use requires suitable flexible cables assuring the watertightness of the cable gland. CoB LED version is supplied with a 2-way terminal block for 3-conductor cables – IP68.

During the installation and the maintenance of the fixtures it is important to be careful and avoid damages on the paint coating.

Damages on the coating exposed to outdoor conditions or water, could cause corrosion.

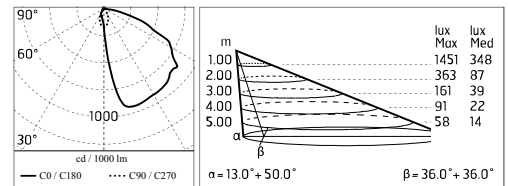
Chemical substances affect the anticorrosion covering protection.

### Main specifications

<b>Power (W)</b>	22	<b>Mountings</b>	Pole, Wall surface, Floor
<b>System power (W)</b>	24	<b>Environment</b>	Outdoor
<b>CCT (K)</b>	4000K		
<b>CRI</b>	80		
<b>Net lumen (lm)</b>	1698		

### Optical

<b>Lighting type</b>	Direct
<b>LED type</b>	LED array
<b>Light distribution</b>	Asymmetric
<b>Optical type</b>	Wide flood



### Electrical

<b>Frequency (Hz)</b>	50-60	<b>Insulation class</b>	I
<b>Voltage (V)</b>	220-240		
<b>Dimmable</b>	No		
<b>Driver type</b>	Not dimmable		
<b>Emergency</b>	Without		

### Physical

<b>Color</b>	Black
--------------	-------

## Mini Franco Asymmetric Optic Cob Led



---

Pole Bracket Minifranco/Perseo 16 Ø  
102 mm 180 mm Single  
221.4



---

Pole Bracket Minifranco/Perseo 16 Ø  
102 mm 180 mm Double  
222.4



---

Pole Bracket Minifranco/Perseo 16 Ø  
102 mm 500 mm Single  
223.4



---

Pole Bracket Minifranco/Perseo 16 Ø  
102 mm 500 mm Double  
224.4



---

Pole Bracket Minifranco/Perseo 16 Ø  
60 mm 180 mm Single  
225.4



---

Pole Bracket Minifranco/Perseo 16 Ø  
60 mm 180 mm Double  
226.4



---

Pole Bracket Minifranco/Perseo 16 Ø  
60 mm 500 mm Single  
227.4



---

Pole Bracket Minifranco/Perseo 16 Ø  
60 mm 500 mm Double  
228.4



---

Pole Bracket Minifranco/Perseo 16 Ø  
76 mm 180 mm Single  
229.4



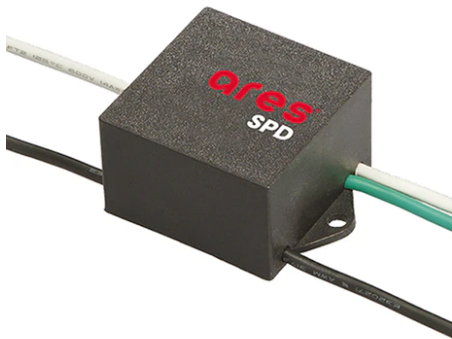
Pole Bracket Minifranco/Perseo 16 Ø  
76 mm 180 mm Double  
230.4



Pole Bracket Minifranco/Perseo 16 Ø  
76 mm 500 mm Single  
231.4



Pole Bracket Minifranco/Perseo 16 Ø  
76 mm 500 mm Double  
232.4



SPD (Surge Protection Device)  
237



Wall Bracket 620 mm  
Minifranco/Perseo 16  
88.4



Pole Mini Franco h 2000(with Base) mm  
Ø60 mm  
117.4



Pole Franco/Perseo/Dooku h 3500(with  
Base) mm Ø76 mm  
248.3



Pole Franco/Perseo/Dooku h 3500(with  
Base) mm Ø76 mm  
248.6



Pole Franco/Perseo/Dooku h 4500(with  
Base) mm Ø76 mm  
249.3



---

Pole Franco/Perseo/Dooku h 4500(with Base) mm Ø76 mm  
249.6



---

Pole Franco/Perseo/Dooku h 3500(+500 mm Inground) mm Ø76 mm  
250.3



---

Pole Franco/Perseo/Dooku h 3500(+500 mm Inground) mm Ø76 mm  
250.6



---

Pole Franco/Perseo/Dooku h 4500(+500 mm Inground) mm Ø76 mm  
251.3



---

Pole Franco/Perseo/Dooku h 4500(+500 mm Inground) mm Ø76 mm  
251.6



---

Pole Mini Franco h 500(with Base) mm Ø60 mm  
1005.4



---

Pole Mini Franco h 900(with Base) mm Ø60 mm  
1009.4



---

Pole Mini Franco h 500(+300 mm Inground) mm Ø60 mm  
1105.4



---

Pole Mini Franco h 900(+300 mm Inground) mm Ø60 mm  
1109.4



Pole Ø 102 mm h 4000 mm With Base



Pole Ø 102 mm h 4000 mm With Base



Pole Ø 102 mm h 4000(+500 mm In-ground) mm  
4145.3



Pole Ø 102 mm h 4000(+500 mm In-ground) mm  
4145.6



Pole Ø 102 mm h 5000 mm With Base  
4150.3



Pole Ø 102 mm h 5000 mm With Base  
4150.6



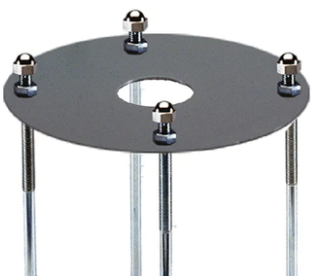
Pole Ø 102 mm h 5000(+500 mm In-ground) mm  
4155.3



Pole Ø 102 mm h 5000(+500 mm In-ground) mm  
4155.6



Base Plate and Fixing Bolts for Pole Ø 102 mm h 4000/5000 mm with Base  
116





---

Base Plate and Fixing Bolts Mini  
Franco  
243