

## Maxi Franco Street Optic Power Led Dimmable 1-10V

■ 9724714-310.6 - Grey



Luminaire for installation on wall or on pole.

Configuration: die-cast aluminium structure, EN AB-47100 alloy (low copper content) and pure aluminium reflector. Glass diffuser: extra-clear. Graduated stainless steel fixing plate for a precise adjustment.

Double layer coating for high resistance to corrosion: the aluminium components are painted with a double coat using powders which are compliant with QUALICOAT standards: a first layer of epoxy powder (with excellent chemical and mechanical resistance) and a second finishing layer of polyester powder (resistant to UV rays and atmospheric agents). The entire painting process of the aluminium fitting starts from components which have been sand-blasted in advance to make the surface more porous and increase the adherence of the paint. Ares effects alkaline and acid washing to clean the surfaces completely, then rinses with demineralised water to remove any residue particles, subsequently a chemical conversion treatment is done to protect against rusting.

Protection rating: IP65

In compliance with EN60598-1 standards

Class of insulation: I

Installation: wiring through a M20x1,5 metal cable gland (7mm <math>\leq \phi </math> <math>< 13\text{mm}</math> cables). Outdoor use requires suitable flexible cables assuring the watertightness of the cable gland.

During the installation and the maintenance of the fixtures it is important to be careful and avoid damages on the paint coating.

Damages on the coating exposed to outdoor conditions or water, could cause corrosion.

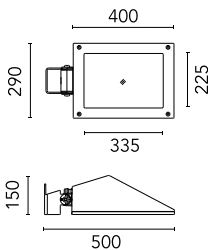
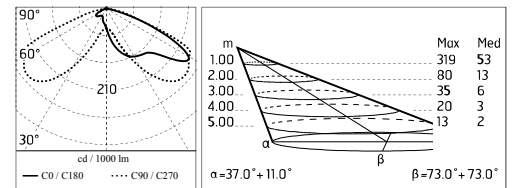
Chemical substances affect the anticorrosion covering protection.

### Main specifications

<b>Power (W)</b>	42	<b>Mountings</b>	Pole, Wall surface, Floor
<b>System power (W)</b>	47	<b>Environment</b>	Outdoor
<b>CCT (K)</b>	4000K		
<b>CRI</b>	80		
<b>Net lumen (lm)</b>	2037		

### Optical

<b>Lighting type</b>	Direct
<b>LED type</b>	Power LED
<b>Light distribution</b>	Asymmetric
<b>Optical type</b>	Wide flood



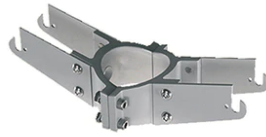
### Electrical

<b>Frequency (Hz)</b>	50-60	<b>Insulation class</b>	I
<b>Voltage (V)</b>	110-240		
<b>Dimmable</b>	Yes		
<b>Driver type</b>	Electronic dimmable 1-10V		
<b>Emergency</b>	Without		

### Physical

<b>Color</b>	Grey
--------------	------

# Maxi Franco Street Optic Power Led Dimmable 1-10V



---

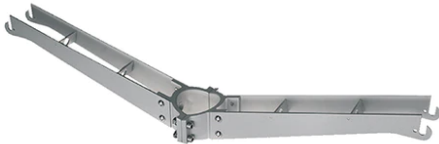
Pole Bracket Franco/Perseo 30 Ø 102 mm 180 mm Double  
78.6

---

Pole Bracket Franco/Perseo 30 Ø 102 mm 180 mm Double  
90.6

---

Pole Bracket Franco/Perseo 30 Ø 102 mm 500 mm Single  
79.6



---

Pole Bracket Franco/Perseo 30 Ø 102 mm 500 mm Double  
89.6

---

Pole Bracket Franco/Perseo 30 Ø 60 mm 180 mm Double  
93.6

---

Pole Bracket Franco/Perseo 30 Ø 60 mm 180 mm Double  
95.6



---

Pole Bracket Franco/Perseo 30 Ø 102 mm 180 mm Double  
94.6

---

Pole Bracket Franco/Perseo 30 Ø 60 mm 500 mm Double  
96.6

---

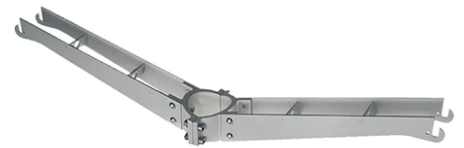
Pole Bracket Franco/Perseo 30 Ø 76 mm 180 mm Single  
112.6



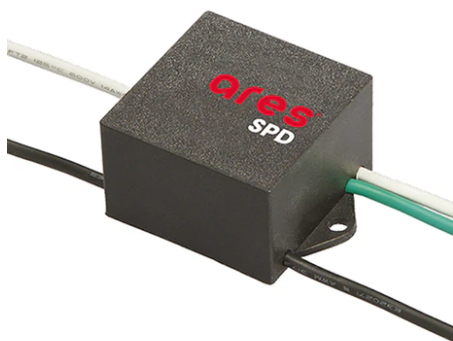
Pole Bracket Franco/Perseo 30 Ø 76 mm 180 mm Double  
114.6



Pole Bracket Franco/Perseo 30 Ø 76 mm 500 mm Single  
113.6



Pole Bracket Franco/Perseo 30 Ø 76 mm 500 mm Double  
115.6



SPD (Surge Protection Device)  
237



Pole Franco/Perseo/Dooku h 3500(with Base) mm Ø76 mm  
248.6



Pole Franco/Perseo/Dooku h 4500(with Base) mm Ø76 mm  
249.6



Pole Franco/Perseo/Dooku h 3500(+500 mm Inground) mm Ø76 mm  
250.6



Pole Franco/Perseo/Dooku h 4500(+500 mm Inground) mm Ø76 mm  
251.6



Pole Ø 102 mm h 4000 mm With Base  
4140.6



---

Pole Ø 102 mm h 5000 mm With Base  
4150.6

---

Pole Ø 102 mm h 4000(+500 mm In-  
ground) mm  
4145.6

---

Pole Ø 102 mm h 5000(+500 mm In-  
ground) mm  
4155.6



---

Base Plate and Fixing Bolts for Pole Ø  
102 mm h 4000/5000 mm with Base  
116