

Maxi Franco Street Optic

■ 9771109.12 - Forest Green



Luminaire for installation on wall or on pole.

Configuration: die-cast aluminium structure, EN AB-47100 alloy (low copper content) and pure aluminium reflector. Glass diffuser: extra-clear. Graduated stainless steel fixing plate for a precise adjustment.

Double layer coating for high resistance to corrosion: the aluminium components are painted with a double coat using powders which are compliant with QUALICOAT standards: a first layer of epoxy powder (with excellent chemical and mechanical resistance) and a second finishing layer of polyester powder (resistant to UV rays and atmospheric agents). The entire painting process of the aluminium fitting starts from components which have been sand-blasted in advance to make the surface more porous and increase the adherence of the paint. Ares effects alkaline and acid washing to clean the surfaces completely, then rinses with demineralised water to remove any residue particles, subsequently a chemical conversion treatment is done to protect against rusting.

Protection rating: IP65

In compliance with EN60598-1 standards

Class of insulation: I

Installation: wiring through a M20x1,5 metal cable gland (7mm ϕ <math><13\text{mm}</math> cables). Outdoor use requires suitable flexible cables assuring the watertightness of the cable gland.

During the installation and the maintenance of the fixtures it is important to be careful and avoid damages on the paint coating.

Damages on the coating exposed to outdoor conditions or water, could cause corrosion.

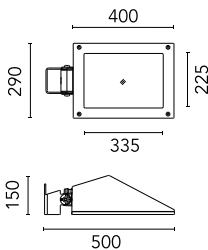
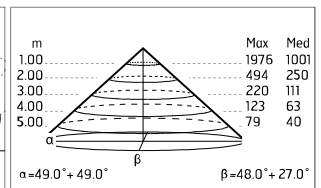
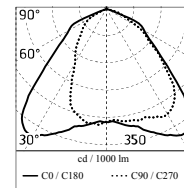
Chemical substances affect the anticorrosion covering protection.

Main specifications

Power (W)	220-240
System power (W)	70
Mountings	Pole, Wall surface, Floor
Environment	Outdoor

Optical

Lighting type	Direct
Light distribution	Asymmetric
Optical type	Wide flood



Electrical

Frequency (Hz)	50-60	Emergency	Without
Voltage (V)	220-240	Insulation class	I
Lamp holder	G12		
Dimmable	No		
Driver type	Not dimmable		

Physical

Color	Forest Green
--------------	--------------

Maxi Franco Street Optic



Pole Bracket Franco/Perseo 30 Ø 102 mm 180 mm Double
78.12



Pole Bracket Franco/Perseo 30 Ø 102 mm 180 mm Double
90.12



Pole Bracket Franco/Perseo 30 Ø 102 mm 500 mm Single
79.12



Pole Bracket Franco/Perseo 30 Ø 102 mm 500 mm Double
89.12



Pole Bracket Franco/Perseo 30 Ø 60 mm 180 mm Double
93.12



Pole Bracket Franco/Perseo 30 Ø 60 mm 180 mm Double
95.12



Pole Bracket Franco/Perseo 30 Ø 102 mm 180 mm Double
94.12



Pole Bracket Franco/Perseo 30 Ø 60 mm 500 mm Double
96.12



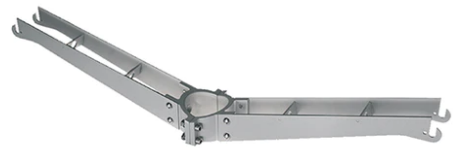
Pole Bracket Franco/Perseo 30 Ø 76 mm 180 mm Single
112.12



Pole Bracket Franco/Perseo 30 Ø 76
mm 180 mm Double
114.12



Pole Bracket Franco/Perseo 30 Ø 76
mm 500 mm Single
113.12



Pole Bracket Franco/Perseo 30 Ø 76
mm 500 mm Double
115.12



Pole Franco/Perseo/Dooku h 3500(with
Base) mm Ø76 mm
248.3



Pole Franco/Perseo/Dooku h 3500(with
Base) mm Ø76 mm
248.6



Pole Franco/Perseo/Dooku h 4500(with
Base) mm Ø76 mm
249.3



Pole Franco/Perseo/Dooku h 4500(with
Base) mm Ø76 mm
249.6



Pole Franco/Perseo/Dooku h 3500(+500
mm Inground) mm Ø76 mm
250.3



Pole Franco/Perseo/Dooku h 3500(+500
mm Inground) mm Ø76 mm
250.6



Pole Franco/Perseo/Dooku h 4500(+500 mm Inground) mm Ø76 mm
251.3



Pole Franco/Perseo/Dooku h 4500(+500 mm Inground) mm Ø76 mm
251.6



Pole Ø 102 mm h 4000 mm With Base
4140.3



Pole Ø 102 mm h 4000 mm With Base
4140.6



Pole Ø 102 mm h 4000(+500 mm Inground) mm
4145.3



Pole Ø 102 mm h 4000(+500 mm Inground) mm
4145.6



Pole Ø 102 mm h 5000 mm With Base
4150.3



Pole Ø 102 mm h 5000 mm With Base
4150.6



Pole Ø 102 mm h 5000(+500 mm Inground) mm
4155.3



Pole Ø 102 mm h 5000(+500 mm In-ground) mm
4155.6



Base Plate and Fixing Bolts for Pole Ø
102 mm h 4000/5000 mm with Base
116