

## Landlord Spot Ø50 PWM Dimmable White

■ F004E42A001 - White



IP65 projector for external use made of turned aluminium body and powered at 24V, and available in 2700K, 3000K and 4000K colour temperatures. With reference to the horizontal axis, the spot can be oriented up to 30° down and up to 90° up.

Landlord Spots are available in two sizes, Ø40 and Ø50 head, both equipped with desmontable front ferrule, in order to install flood lens or up to two honeycombs for maximum visual confort.

Landlord Spots can be installed on solid ground spikes, with the possibility of an optional picket, on wall base, or on the innovative tree belt, designed to fix the luminaries directly on tree branches. Spot adjustable head for installation on ground poles or on wall base.

Poles and base to be ordered as separated accessories.

Heads are equipped with a dismountable ferrule, to insert flood lens or up to two honeycombs, (to be ordered as separate accessories).

24V remote power supply to be ordered separately.

Each head comes with a 2000 mm lenght outgoing cable and a wiring kit.

- WALL-MOUNTED VERSION: required accessory Wall base code F004Z0400XX

- BOLLARD VERSION: required accessory Pole with base code F004Z0100XX/F004Z0200XX/F004Z0300XX

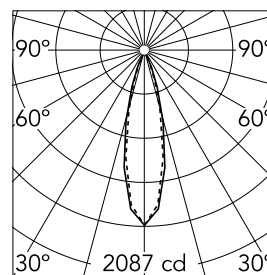
- TREE-MOUNTED VERSION: required accessory Tree strap code F004Z070000

### Main specifications

|                       |       |                    |                      |
|-----------------------|-------|--------------------|----------------------|
| <b>Lamp category</b>  | LED   | <b>Mountings</b>   | Wall, Ground         |
| <b>Power (W)</b>      | 7.20  | <b>Environment</b> | Outdoor wet location |
| <b>CCT (K)</b>        | 4000K |                    |                      |
| <b>CRI</b>            | 80    |                    |                      |
| <b>Net lumen (lm)</b> | 492   |                    |                      |

### Optical

|                               |           |
|-------------------------------|-----------|
| <b>Lighting type</b>          | Direct    |
| <b>LED type</b>               | Power LED |
| <b>Light distribution</b>     | Symmetric |
| <b>Optical type</b>           | Medium    |
| <b>Beam angle (°)</b>         | 24        |
| <b>Beam angle C90-270 (°)</b> | 24        |



Beam Angle: 26°

| h(m) | E(lx) | D(m) |
|------|-------|------|
| 1    | 2087  | 0.47 |
| 2    | 522   | 0.94 |
| 3    | 232   | 1.41 |
| 4    | 130   | 1.88 |
| 5    | 83    | 2.35 |

Luminous flux luminaire  
492 lm

### Electrical

|                       |  |                         |         |
|-----------------------|--|-------------------------|---------|
| <b>Frequency (Hz)</b> | 50-60  | <b>Emergency</b>        | Without |
| <b>Voltage (V)</b>    | 24   | <b>Insulation class</b> | III     |
| <b>Dimmable</b>       | Yes  |                         |         |
| <b>Driver</b>         | Remote<br>excluded<br>Dimmable DALI<br>PWM, Dimmable<br>1-10 PWM |                         |         |

### Physical

|                     |            |
|---------------------|------------|
| <b>Color</b>        | White      |
| <b>Orientation</b>  | Adjustable |
| <b>Weight (kg)</b>  | 0.35       |
| <b>Rotation (°)</b> | 359        |

### Note

During the installation and the maintenance of the fixtures it is important to be careful and avoid damages on the paint coating.

Damages on the coating exposed to outdoor conditions or water, could cause corrosion.

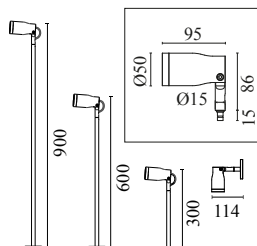
Chemical substances affect the anticorrosion covering protection.

For LED fixtures, there is evidence that most of the damages are connected to electrical effects related to the insulations, which cause destructive electrical discharges

These effects are frequently caused by:

- over voltage coming from the mains' network where fixture is connected.
- electrostatic discharge (ESD) coming from the environment.

The use of a protective device against the overvoltage on the electrical installation is warmly suggest this helps to reduce the intensity of some of these phenomenon and prevent irreversible damages. The selection of the type of





Landlord Spot Ø50 PWM Dimmable White



Power supply 24Vdc 70W / 220-240V  
IP67 Class II selv. Non Dimmable  
RF25749

3/4 way terminal block 4 poles IP68  
H2O stop. (ø5,5÷12mm cable)  
F990C010000

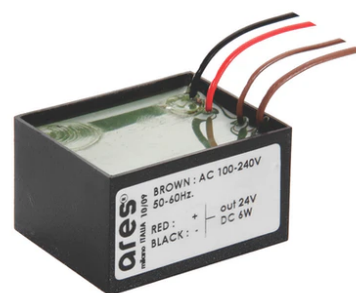
Power supply 24Vdc 50W / 120-240V  
IP67 Class II selv. Non Dimmable  
RF25755



Pole with base H 300 mm White  
F004Z010001

Pole with base H 900 mm White  
F004Z030001

2 way terminal block 4 poles IP68 H20  
stop. (ø5,5÷12mm cable)  
F990C00A000



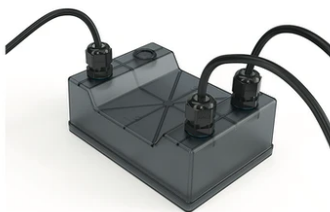
Power supply 24V 10W /110-240V IP20  
Class II selv. Non Dimmable  
RF25747

Honeycomb  
F004Z0L0000

Power supply 24V 8W / 110-240V IP65  
Class II selv. Non Dimmable  
RF25748



Pole with base H 600 mm White  
F004Z020001



DALI PWM control interface 24Vdc  
120W. IP67. Power supply not included  
F990B01A000



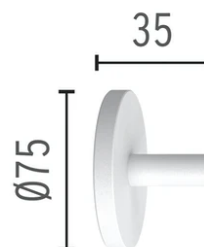
Power supply 24V 8W / 110-240V IP20  
Class II selv.\_Non Dimmable  
RF25754



Power supply 120/270Vac / 24Vdc.70W  
Dimmable DALI PWM control. IP67  
F990B05A000



1-10V PWM control interface 24Vdc  
120W. IP67. Power supply not included.  
F990B00A000



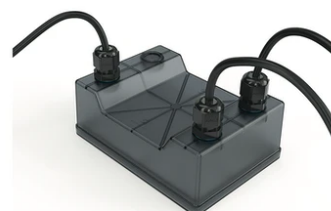
Wall base White  
F004Z040001



Tree strap  
F004Z070000



Flood lens  
F004Z0H0000



Power supply 120/270Vac / 24Vdc.35W  
Dimmable 1-10V PWM control. IP67  
F990B02A000



---

Earth stick  
F004Z060000



---

Power supply 120/270Vac / 24Vdc.35W  
Dimmable DALI PWM control. IP67  
F990B03A000



---

Power supply 24V 10W / 110-240V IP67  
Class II selv.\_Non Dimmable  
RF25757



---

Power supply 120/270Vac / 24Vdc.70W  
Dimmable 1-10V PWM control. IP67  
F990B04A000