

Landlord Spot Ø40 PWM Dimmable Forest Green

■ F004D31A012 - Forest Green



IP65 projector for external use made of turned aluminium body and powered at 24V, and available in 2700K, 3000K and 4000K colour temperatures. With reference to the horizontal axis, the spot can be oriented up to 30° down and up to 90° up.

Landlord Spots are available in two sizes, Ø40 and Ø50 head, both equipped with desmontable front ferrule, in order to install flood lens or up to two honeycombs for maximum visual confort.

Landlord Spots can be installed on solid ground spikes, with the possibility of an optional picket, on wall base, or on the innovative tree belt, designed to fix the luminaries directly on tree branches. Spot adjustable head for installation on ground poles or on wall base.

Poles and base to be ordered as separated accessories.

Heads are equipped with a dismountable ferrule, to insert flood lens or up to two honeycombs, (to be ordered as separate accessories).

24V remote power supply to be ordered separately.

Each head comes with a 2000 mm lenght outgoing cable and a wiring kit.

- WALL-MOUNTED VERSION: required accessory Wall base code F004Z0400XX

- BOLLARD VERSION: required accessory Pole with base code F004Z0100XX/F004Z0200XX/F004Z0300XX

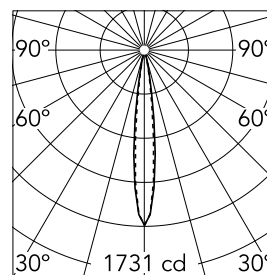
- TREE-MOUNTED VERSION: required accessory Tree strap code F004Z070000

Main specifications

Lamp category	LED	Mountings	Wall, Ground
Power (W)	2.3	Environment	Outdoor wet location
CCT (K)	3000K		
CRI	80		
Net lumen (lm)	135		

Optical

Lighting type	Direct
LED type	Power LED
Light distribution	Symmetric
Optical type	Spot
Beam angle (°)	12
Beam angle C90-270 (°)	12



Beam Angle: 14°

h(m)	E(lx)	D(m)
1	1731	0.24
2	433	0.48
3	192	0.72
4	108	0.97
5	69	1.21

Luminous flux luminaire
130 lm

Electrical

Frequency (Hz)	50-60	Emergency	Without
Voltage (V)	24	Insulation class	III
Dimmable	Yes		
Driver	Remote excluded Dimmable DALI PWM, Dimmable 1-10 PWM		

Physical

Color	Forest Green
Orientation	Adjustable
Weight (kg)	0.3
Rotation (°)	359

Note

During the installation and the maintenance of the fixtures it is important to be careful and avoid damages on the paint coating.

Damages on the coating exposed to outdoor conditions or water, could cause corrosion.

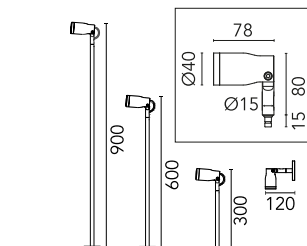
Chemical substances affect the anticorrosion covering protection.

For LED fixtures, there is evidence that most of the damages are connected to electrical effects related to the insulations, which cause destructive electrical discharges

These effects are frequently caused by:

- over voltage coming from the mains' network where fixture is connected.
- electrostatic discharge (ESD) coming from the environment.

The use of a protective device against the overvoltage on the electrical installation is warmly suggest this helps to reduce the intensity of some of these phenomenon and prevent irreversible damages. The selection of the type of



Landlord Spot Ø40 PWM Dimmable Forest Green



Pole with base H 300 mm Forest Green
F004Z010012



3/4 way terminal block 4 poles IP68
H2O stop. (ø5,5÷12mm cable)
F990C010000



Power supply 24V 8W / 110-240V IP65
Class II selv. Non Dimmable
RF25748



Power supply 24V 10W / 110-240V IP67
Class II selv._Non Dimmable
RF25757



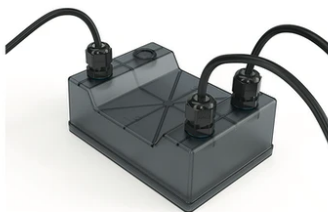
Power supply 24V 8W / 110-240V IP20
Class II selv._Non Dimmable
RF25754



Power supply 24V 10W /110-240V IP20
Class II selv. Non Dimmable
RF25747



Pole with base H 600 mm Forest Green
F004Z020012



Power supply 120/270Vac / 24Vdc.70W
Dimmable DALI PWM control. IP67
F990B05A000



2 way terminal block 4 poles IP68 H2O
stop. (ø5,5÷12mm cable)
F990C00A000



Power supply 120/270Vac / 24Vdc.35W
Dimmable DALI PWM control. IP67
F990B03A000



Pole with base H 900 mm Forest Green
F004Z030012



Power supply 24Vdc 70W / 220-240V
IP67 Class II selv. Non Dimmable
RF25749



1-10V PWM control interface 24Vdc
120W. IP67. Power supply not included.
F990B00A000



Power supply 24Vdc 50W / 120-240V
IP67 Class II selv. Non Dimmable
RF25755



Honeycomb
F004Z0B0000



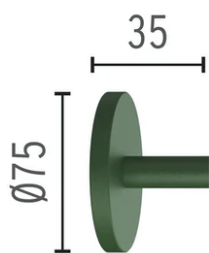
Flood lens
F004Z0C0000



Tree strap
F004Z070000



Earth stick
F004Z060000



Wall base Forest Green
F004Z040012



Power supply 120/270Vac / 24Vdc.35W
Dimmable 1-10V PWM control. IP67
F990B02A000



Power supply 120/270Vac / 24Vdc.70W
Dimmable 1-10V PWM control. IP67
F990B04A000



DALI PWM control interface 24Vdc
120W. IP67. Power supply not included
F990B01A000