

## Landlord Spot Ø40 PWM Dimmable Anodized Black

■ F004F21A071 - Anodized Black



IP65 projector for external use made of turned aluminium body and powered at 24V, and available in 2700K, 3000K and 4000K colour temperatures. With reference to the horizontal axis, the spot can be oriented up to 30° down and up to 90° up.

Landlord Spots are available in two sizes, ø40 and ø50 head, both equipped with desmontable front ferrule, in order to install flood lens or up to two honeycombs for maximum visual confort.

Landlord Spots can be installed on solid ground spikes, with the possibility of an optional picket, on wall base, or on the innovative tree belt, designed to fix the luminaries directly on tree branches. Spot adjustable head for installation on ground poles or on wall base.

Poles and base to be ordered as separated accessories.

Heads are equipped with a dismountable ferrule, to insert flood lens or up to two honeycombs, (to be ordered as separate accessories).

24V remote power supply to be ordered separately.

Each head comes with a 2000 mm lenght outgoing cable and a wiring kit.

- WALL-MOUNTED VERSION: required accessory Wall base code F004Z0400XX

- BOLLARD VERSION: required accessory Pole with base code F004Z0100XX/F004Z0200XX/F004Z0300XX

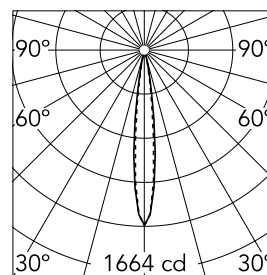
- TREE-MOUNTED VERSION: required accessory Tree strap code F004Z070000

### Main specifications

<b>Lamp category</b>	LED	<b>Mountings</b>	Wall, Ground
<b>Power (W)</b>	2.30	<b>Environment</b>	Outdoor wet location
<b>CCT (K)</b>	2700K		
<b>CRI</b>	80		
<b>Net lumen (lm)</b>	130		

### Optical

<b>Lighting type</b>	Direct
<b>LED type</b>	Power LED
<b>Light distribution</b>	Symmetric
<b>Optical type</b>	Spot
<b>Beam angle (°)</b>	12
<b>Beam angle C90-270 (°)</b>	12



Beam Angle: 14°

h(m)	E(lx)	D(m)
1	1664	0.24
2	416	0.48
3	185	0.72
4	104	0.97
5	67	1.21

Luminous flux luminaire  
125 lm

### Electrical

<b>Frequency (Hz)</b>	50-60	<b>Emergency</b>	Without
<b>Voltage (V)</b>	24	<b>Insulation class</b>	III
<b>Dimmable</b>	Yes		
<b>Driver</b>	Remote excluded Dimmable DALI PWM, Dimmable 1-10 PWM		

### Physical

<b>Color</b>	Anodized Black
<b>Orientation</b>	Adjustable
<b>Weight (kg)</b>	0.30
<b>Rotation (°)</b>	359

### Note

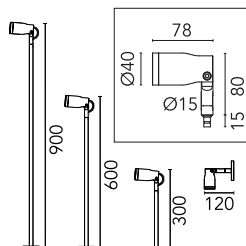
Carefully install and maintain the fixtures to avoid damaging the coating.

For LED fixtures, most problems are tied to electrical issues related to the insulation, which may cause destructive electrical discharges.

These are frequently caused by:

- power surges from the power network where fixture is connected.
- electrostatic discharge (ESD) from the environment.

We recommend installing a power-surge protection device on the fixture to reduce the intensity of these effects and prevent irreversible damages. The specific device should be chosen based on the electrical characteristics.



## Landlord Spot Ø40 PWM Dimmable Anodized Black



Honeycomb  
F004Z0B0000



Flood lens  
F004Z0C0000



Earth stick  
F004Z060000



Tree strap  
F004Z070000



Power supply 24Vdc 50W / 120-240V  
IP67 Class II selv. Non Dimmable  
RF25755



Pole with base H 900 mm Anodized  
Black  
F004Z0F0071



Power supply 24Vdc 70W / 220-240V  
IP67 Class II selv. Non Dimmable  
RF25749



Pole with base H 600 mm Anodized  
Black  
F004Z0E0071



Power supply 24V 10W / 110-240V IP67  
Class II selv.\_Non Dimmable  
RF25757



2 way terminal block 4 poles IP68 H20 stop. (ø5,5+12mm cable)  
F990C00A000



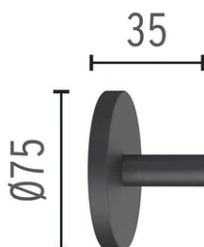
Power supply 24V 8W / 110-240V IP65 Class II selv. Non Dimmable  
RF25748



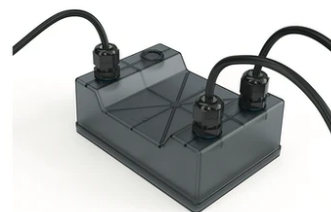
Power supply 24V 10W / 110-240V IP20 Class II selv. Non Dimmable  
RF25747



Power supply 24V 8W / 110-240V IP20 Class II selv. Non Dimmable  
RF25754



Wall base Anodized Black  
F004Z0A0071



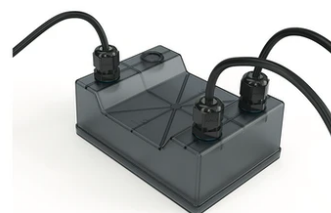
DALI PWM control interface 24Vdc 120W. IP67. Power supply not included  
F990B01A000



3/4 way terminal block 4 poles IP68 H2O stop. (ø5,5+12mm cable)  
F990C010000



Power supply 120/270Vac / 24Vdc.35W Dimmable DALI PWM control. IP67  
F990B03A000



Power supply 120/270Vac / 24Vdc.70W Dimmable DALI PWM control. IP67  
F990B05A000



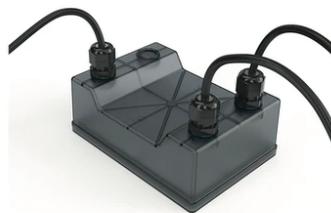

---

Power supply 120/270Vac / 24Vdc.70W  
Dimmable 1-10V PWM control. IP67  
F990B04A000




---

Pole with base H 300 mm Anodized  
Black  
F004Z0D0071




---

1-10V PWM control interface 24Vdc  
120W. IP67. Power supply not included.  
F990B00A000




---

Power supply 120/270Vac / 24Vdc.35W  
Dimmable 1-10V PWM control. IP67  
F990B02A000