

Landlord Soft PWM Dimmable Forest Green

■ F004C20A012 - Forest Green



IP65 projector for external use, designed to offer diffuse lighting.

It is characterized by an aluminium disk shape head, orientable up to 20° beam and lockable in position, to be powered at 24V, and available in 2700K, 3000K and 4000K colour temperature.

It is the perfect tool to light bushes, flowerbed and transit areas with an homogenous diffuse light beam.

Landlord Soft can be installed on solid ground spikes, with the possibility of an optional picket.

20° adjustable head for installation on ground poles.

Poles to be ordered as separated accessories.

24V remote power supply to be ordered separately.

Each head comes with a 2000 mm lenght outgoing cable and a wiring kit.

Main specifications

Lamp category	LED	Mountings	Ground
Power (W)	5	Environment	Outdoor wet location
CCT (K)	2700K		
CRI	80		
Net lumen (lm)	242		

Optical

Lighting type	Direct	Beam angle C90-270	51
LED type	Top LED	(°)	
Light distribution	Symmetric		
Optical type	Diffused light		
Beam angle (°)	51		

Electrical

Frequency (Hz)	50-60	Emergency	Without
Voltage (V)	24	Insulation class	III
Dimmable	Yes		
Driver	Remote excluded		
Driver type	Dimmable DALI PWM, Dimmable 1-10 PWM		

Physical

Color	Forest Green
Orientation	Adjustable
Weight (kg)	0.4
Rotation (°)	359

Note

During the installation and the maintenance of the fixtures it is important to be careful and avoid damages on the paint coating.

Damages on the coating exposed to outdoor conditions or water, could cause corrosion.

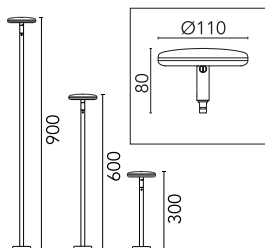
Chemical substances affect the anticorrosion covering protection.

For LED fixtures, there is evidence that most of the damages are connected to electrical effects related to the insulations, which cause destructive electrical discharges

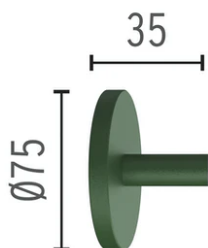
These effects are frequently caused by:

- over voltage coming from the mains' network where fixture is connected.
- electrostatic discharge (ESD) coming from the environment.

The use of a protective device against the overvoltage on the electrical installation is warmly suggest this helps to reduce the intensity of some of these phenomenon and prevent irreversible damages. The selection of the type of device to be used must be adjust on the electrical plant.



Landlord Soft PWM Dimmable Forest Green



Wall base Forest Green
F004Z040012



Pole with base H 600 mm Forest Green
F004Z020012



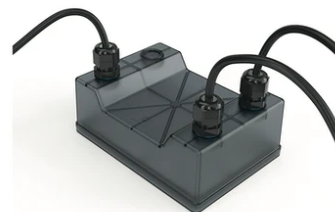
Power supply 24Vdc 70W / 220-240V
IP67 Class II selv. Non Dimmable
RF25749



Power supply 24V 8W / 110-240V IP20
Class II selv._Non Dimmable
RF25754



1-10V PWM control interface 24Vdc
120W. IP67. Power supply not included.
F990B00A000



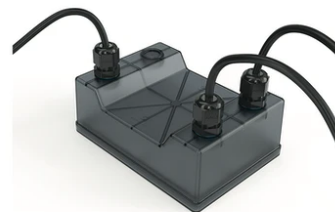
Power supply 120/270Vac / 24Vdc.35W
Dimmable 1-10V PWM control. IP67
F990B02A000



Power supply 24Vdc 20W / 110-240Vdc
(15W@110V) IP67 Class II selv.
Dimmable DALI
RF26387



Power supply 24V 8W / 110-240V IP65
Class II selv. Non Dimmable
RF25748



Power supply 120/270Vac / 24Vdc.70W
Dimmable DALI PWM control. IP67
F990B05A000



Power supply 120/270Vac / 24Vdc.35W
Dimmable DALI PWM control. IP67
F990B03A000



Pole with base H 900 mm Forest Green
F004Z030012



2 way terminal block 4 poles IP68 H20
stop. (Ø5,5+12mm cable)
F990C00A000



DALI PWM control interface 24Vdc
120W. IP67. Power supply not included
F990B01A000



Power supply 24V 10W / 110-240V IP67
Class II selv._Non Dimmable
RF25757



Power supply 24Vdc 50W / 120-240V
IP67 Class II selv. Non Dimmable
RF25755



Power supply 24V 10W /110-240V IP20
Class II selv. Non Dimmable
RF25747



Power supply 120/270Vac / 24Vdc.70W
Dimmable 1-10V PWM control. IP67
F990B04A000



Pole with base H 300 mm Forest Green
F004Z010012



Earth stick
F004Z060000



3/4 way terminal block 4 poles IP68
H2O stop. (ø5,5÷12mm cable)
F990C010000