

## Landlord Soft PWM Dimmable Black

■ F004C20A030 - Black



IP65 projector for external use, designed to offer diffuse lighting.

It is characterized by an aluminium disk shape head, orientable up to 20° beam and lockable in position, to be powered at 24V, and available in 2700K, 3000K and 4000K colour temperature.

It is the perfect tool to light bushes, flowerbed and transit areas with an homogenous diffuse light beam.

Landlord Soft can be installed on solid ground spikes, with the possibility of an optional picket.

20° adjustable head for installation on ground poles.

Poles to be ordered as separated accessories.

24V remote power supply to be ordered separately.

Each head comes with a 2000 mm lenght outgoing cable and a wiring kit.

### Main specifications

<b>Lamp category</b>	LED	<b>Mountings</b>	Ground
<b>Power (W)</b>	5	<b>Environment</b>	Outdoor wet location
<b>CCT (K)</b>	2700K		
<b>CRI</b>	80		
<b>Net lumen (lm)</b>	242		

### Optical

<b>Lighting type</b>	Direct	<b>Beam angle C90-270</b>	51
<b>LED type</b>	Top LED	<b>(°)</b>	
<b>Light distribution</b>	Symmetric		
<b>Optical type</b>	Diffused light		
<b>Beam angle (°)</b>	51		

### Electrical

<b>Frequency (Hz)</b>	50-60	<b>Emergency</b>	Without
<b>Voltage (V)</b>	24	<b>Insulation class</b>	III
<b>Dimmable</b>	Yes		
<b>Driver</b>	Remote excluded		
<b>Driver type</b>	Dimmable DALI PWM, Dimmable 1-10 PWM		

### Physical

<b>Color</b>	Black
<b>Orientation</b>	Adjustable
<b>Weight (kg)</b>	0.40
<b>Rotation (°)</b>	359

### Note

During the installation and the maintenance of the fixtures it is important to be careful and avoid damages on the paint coating.

Damages on the coating exposed to outdoor conditions or water, could cause corrosion.

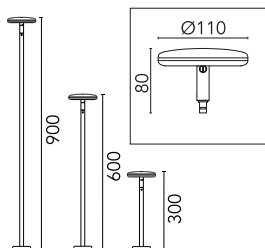
Chemical substances affect the anticorrosion covering protection.

For LED fixtures, there is evidence that most of the damages are connected to electrical effects related to the insulations, which cause destructive electrical discharges

These effects are frequently caused by:

- over voltage coming from the mains' network where fixture is connected.
- electrostatic discharge (ESD) coming from the environment.

The use of a protective device against the overvoltage on the electrical installation is warmly suggest this helps to reduce the intensity of some of these phenomenon and prevent irreversible damages. The selection of the type of device to be used must be adjust on the electrical plant.



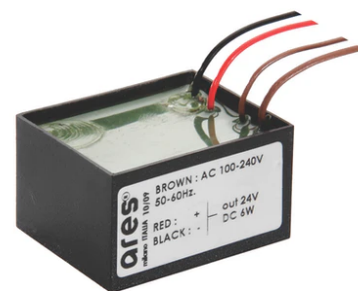
## Landlord Soft PWM Dimmable Black



Power supply 120/270Vac / 24Vdc.35W  
Dimmable 1-10V PWM control. IP67  
F990B02A000



Pole with base H 900 mm Black  
F004Z030030



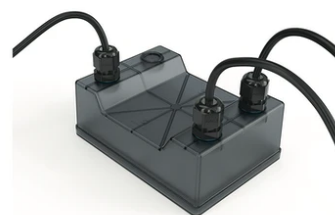
Power supply 24V 8W / 110-240V IP65  
Class II selv. Non Dimmable  
RF25748



Earth stick  
F004Z060000



Power supply 24Vdc 70W / 220-240V  
IP67 Class II selv. Non Dimmable  
RF25749



1-10V PWM control interface 24Vdc  
120W. IP67. Power supply not included.  
F990B00A000



3/4 way terminal block 4 poles IP68  
H2O stop. (ø5,5÷12mm cable)  
F990C010000



2 way terminal block 4 poles IP68 H2O  
stop. (ø5,5÷12mm cable)  
F990C00A000



Pole with base H 600 mm Black  
F004Z020030



Power supply 24Vdc 50W / 120-240V  
IP67 Class II selv. Non Dimmable  
RF25755



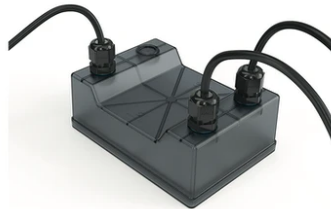
Power supply 24V 8W / 110-240V IP20  
Class II selv.\_Non Dimmable  
RF25754



Power supply 24V 10W / 110-240V IP67  
Class II selv.\_Non Dimmable  
RF25757



Power supply 24Vdc 20W / 110-240Vdc  
(15W@110V) IP67 Class II selv.  
Dimmable DALI  
RF26387



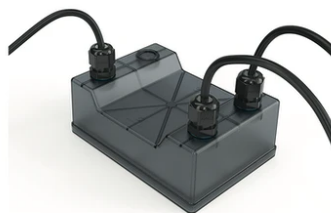
Power supply 120/270Vac / 24Vdc.70W  
Dimmable DALI PWM control. IP67  
F990B05A000



Pole with base H 300 mm Black  
F004Z010030



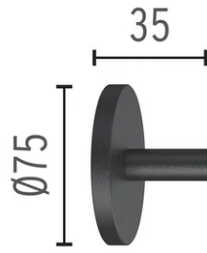
Power supply 120/270Vac / 24Vdc.70W  
Dimmable 1-10V PWM control. IP67  
F990B04A000



Power supply 120/270Vac / 24Vdc.35W  
Dimmable DALI PWM control. IP67  
F990B03A000



DALI PWM control interface 24Vdc  
120W. IP67. Power supply not included  
F990B01A000



---

Wall base Black  
F004Z040030

---

Power supply 24V 10W /110-240V IP20  
Class II selv. Non Dimmable  
RF25747