



Landlord Ground Ø64 PWM Dimmable Stainless Steel

■ F004B21H005 - Stainless Steel

IP67 luminaries for ground recessed installation, powered 24V. Body in anodized, then resined aluminium, external ring in shot-peened stainless steel, encasing the entire control electronics. Head available in two sizes, Ø49 mm, and Ø64 mm, with frontal or grazing emission (one, two or four beams).

Frontal emission version are available with spot or medium optic, or with integrated non removable honeycomb, for maximum visual confort.

To be installed in its installation box.

24V remote power supply to be ordered separately.

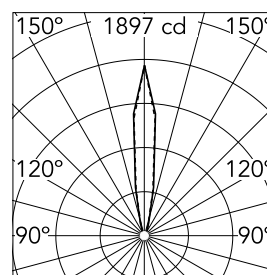
Necessary box for installation, to be ordered separately.

Main specifications

Lamp category	LED	Mountings	Ground recessed, Wall recessed
Power (W)	3.40	Environment	Outdoor wet location
CCT (K)	2700K		
CRI	80		
Net lumen (lm)	183		

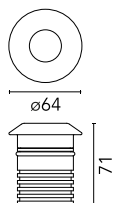
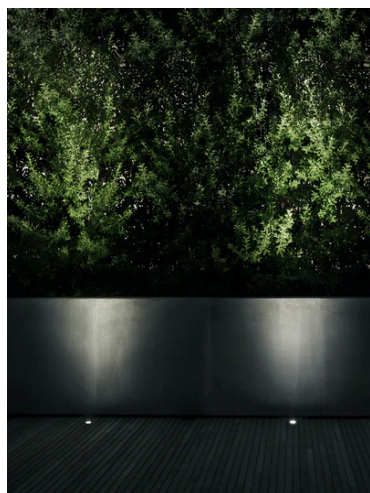
Optical

Lighting type	Direct
LED type	Power LED
Light distribution	Symmetric
Optical type	Spot down
Beam angle (°)	15
Beam angle C90-270 (°)	15



Beam Angle: 15°

h(m)	E(lx)	D(m)
1	1897	0.27
2	474	0.53
3	211	0.80
4	119	1.06
5	76	1.33



Electrical

Frequency (Hz)	50-60	Emergency	Without
Voltage (V)	24	Insulation class	III
Dimmable	Yes		
Driver	Remote excluded		
Driver type	Dimmable DALI PWM, Dimmable 1-10 PWM		

Physical

Color	Stainless Steel
Orientation	Fixed
Weight (kg)	0.35

Note

Carefully install and maintain the fixtures to avoid damaging the coating.

For LED fixtures, most problems are tied to electrical issues related to the insulation, which may cause destructive electrical discharges.

These are frequently caused by:

- power surges from the power network where fixture is connected.
- electrostatic discharge (ESD) from the environment.

We recommend installing a power-surge protection device on the fixture to reduce the intensity of these effects and prevent irreversible damages. The specific device should be chosen based on the electrical characteristics.



Landlord Ground Ø64 PWM Dimmable Stainless Steel



Power supply 120/270Vac / 24Vdc.35W
Dimmable DALI PWM control. IP67
F990B03A000

Power supply 24Vdc 50W / 120-240V
IP67 Class II selv. Non Dimmable
RF25755

DALI PWM control interface 24Vdc
120W. IP67. Power supply not included
F990B01A000



Power supply 24V 10W / 110-240V IP67
Class II selv._Non Dimmable
RF25757

Power supply 120/270Vac / 24Vdc.70W
Dimmable 1-10V PWM control. IP67
F990B04A000

Power supply 24V 10W / 110-240V IP20
Class II selv. Non Dimmable
RF25747



Box for installation
F004Z0K0000

1-10V PWM control interface 24Vdc
120W. IP67. Power supply not included.
F990B00A000

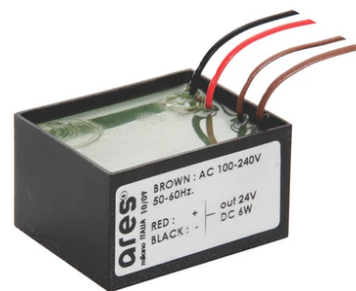
Power supply 120/270Vac / 24Vdc.35W
Dimmable 1-10V PWM control. IP67
F990B02A000



Power supply 24V 8W / 110-240V IP20
Class II selv._Non Dimmable
RF25754



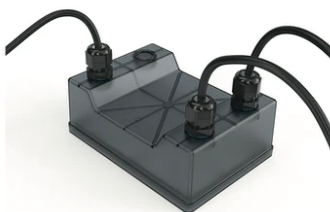
Power supply 24Vdc 70W / 220-240V
IP67 Class II selv. Non Dimmable
RF25749



Power supply 24V 8W / 110-240V IP65
Class II selv. Non Dimmable
RF25748



2 way terminal block 2 poles IP68 H2O
stop. (Ø4÷6,9mm cable)
F990C050000



Power supply 120/270Vac / 24Vdc.70W
Dimmable DALI PWM control. IP67
F990B05A000