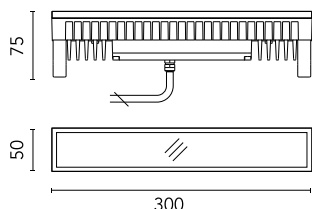


K12 In RGB

524104



Square luminaire for installation in wall and ground – recessed.

Configuration: die-cast aluminium structure, EN AB-47100 alloy (low copper content). Glass diffuser fixed to the aluminium body through a robotic gluing system.

Double layer coating for high resistance to corrosion: the aluminium components are painted with a double coat using powders which are compliant with QUALICOAT standards: a first layer of epoxy powder (with excellent chemical and mechanical resistance) and a second finishing layer of polyester powder (resistant to UV rays and atmospheric agents). The entire painting process of the aluminium fitting starts from components which have been sandblasted in advance to make the surface more porous and increase the adherence of the paint. Ares effects alkaline and acid washing to clean the surfaces completely, then rinses with demineralised water to remove any residue particles, subsequently a chemical conversion treatment is done to protect against rusting.

Protection rating: IP67

In compliance with EN 60598-1 standards

Class of insulation: III

Installation: the luminaire is equipped with 300mm of cable for a quick connection. K12 Power LED is equipped with a dc/dc highly efficient converter that removes electromagnetic interference and allows parallel wiring. The whole range is protected against polarity reversal and sudden voltage peak. Outdoor use requires suitable flexible cables. Installation requires a dedicated box to be ordered separately. It is important to provide a >200mm gravel layer or a drain system (for concrete surface) to ensure good drainage and to avoid water stagnation.

We recommend the use of a connection system with a protection degree greater than or equal to the protection degree of the luminaire.

During the installation and the maintenance of the fixtures it is important to be careful and avoid damages on the paint coating.

Damages on the coating exposed to outdoor conditions or water, could cause corrosion.

Chemical substances affect the anticorrosion covering protection.

Main specifications

Power (W)	7.5
System power (W)	8
CRI	80
Mountings	Ground recessed, Wall recessed
Environment	Outdoor

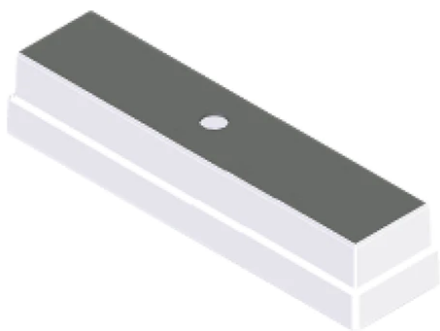
Optical

Lighting type	Direct
LED type	Power LED
Light distribution	Symmetric
Optical type	Diffused light

Electrical

Frequency (Hz)	50-60	Insulation class	III
Voltage (V)	24		
Dimmable	Yes		
Driver type	Dmx		
Emergency	Without		

K12 In RGB



Box for Installation K12Ln
183



Suction Cup K12
153



Power Supply Dmx Rgb 55W
220÷230V/3Chx24Vdc Ip67
148



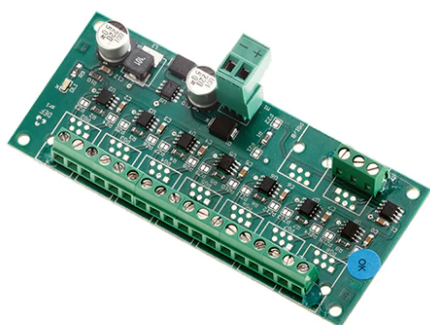
Dmx Controller Dimmer Switch For
Recessed Box
142



Dmx Controller Stand-Alone/PC
Interface
143



Dmx Cable Shielded Twisted Pair
186



DMX splitter 512 – electronic device to
regenerate the monodirectional DMX
signal 1 Input and 7 output, 12-
24Vdc_IP20. Power supply not included
187

