



Bellhop Pole in ground H 4520 mm Dali

■ F003K31D006 - Grey

Pole version of the Bellhop Outdoor Collection for diffuse light.

Aluminum head mounted on a 3m or 4m long extruded pole, available for installation on rigid surface or in ground.

220-240V power supply included.

Ready for in ground installation.

Each luminaire is equipped with 200 mm cable for connection inside the luminaire body.

Recommened connection wit a 2 way terminal block 4 poles IP68 H2O Stop, to be ordered separately.

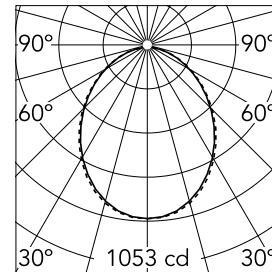
110V and dimmable versions available on request.

Main specifications

Lamp category	LED	Mountings	In-ground
Power (W)	30.00	Environment	Outdoor wet location
CCT (K)	3000K		
CRI	80		
Net lumen (lm)	2590		

Optical

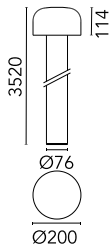
Lighting type	Direct
LED type	Power LED
Light distribution	Symmetric
Optical type	Diffused light
Beam angle (°)	93
Beam angle C90-270 (°)	93



Beam Angle: 93°

h(m)	E(lx)	D(m)
1	1053	2.12
2	263	4.23
3	117	6.35
4	66	8.46
5	42	10.58

Luminous flux luminaire
2450 lm

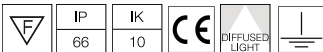


Electrical

Frequency (Hz)	50-60	Emergency	Without
Voltage (V)	220-240	Insulation class	I
Dimmable	Yes		
Driver	Remote included		
Driver type	Dimmable DALI		
	1		

Physical

Color	Grey
Orientation	Fixed
Weight (kg)	11



Note

During the installation and the maintenance of the fixtures it is important to be careful and avoid damages on the paint coating.

Damages on the coating exposed to outdoor conditions or water, could cause corrosion.

Chemical substances affect the anticorrosion covering protection.

For LED fixtures, there is evidence that most of the damages are connected to electrical effects related to the insulations, which cause destructive electrical discharges

These effects are frequently caused by:

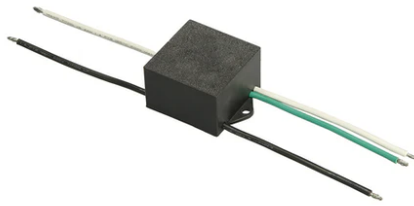
- over voltage coming from the mains' network where fixture is connected.
- electrostatic discharge (ESD) coming from the environment.

The use of a protective device against the overvoltage on the electrical installation is warmly suggest this helps to reduce the intensity of some of these phenomenon and prevent irreversible damages. The selection of the type of device to be used must be adjust on the electrical plant.

Bellhop Pole in ground H 4520 mm Dali



2 way terminal block 5 poles IP68.
($\varnothing 7 \pm 12$ mm cable)
F990C080000



S.P.D. (SURGE PROTECTION DEVICE)
F990E00A000



Base plate with bolt for Bellhop Pole
with base version.
F990G300000