

## Bellhop Bollard H 850 mm Dali

■ F003B41D030 - Black

Bollard version of the Bellhop Outdoor Collection for diffuse light. Made of extruded and die-cast aluminium or stainless steel, Bellhop is available in two heights for the bollard model and with different lumens and luminaire outputs as to comply with any outdoor setting and lighting scenario need.

100-240V power supply included. Ready for installation on solid surface.

Each luminaire is equipped with 200 mm cable for connection inside the luminaire body.

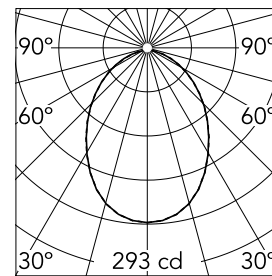
Recommended connection with a 2 way terminal block 4 poles IP68 H2O Stop, to be ordered separately.

### Main specifications

<b>Lamp category</b>	LED	<b>Mountings</b>	Ground
<b>Power (W)</b>	8.00	<b>Environment</b>	Outdoor wet location
<b>CCT (K)</b>	4000K		
<b>CRI</b>	80		
<b>Net lumen (lm)</b>	607		

### Optical

<b>Lighting type</b>	Direct
<b>LED type</b>	Power LED
<b>Light distribution</b>	Symmetric
<b>Optical type</b>	Diffused light
<b>Beam angle (°)</b>	85
<b>Beam angle C90-270 (°)</b>	85



Beam Angle: 85°

h(m)	E(lx)	D(m)
1	293	1.84
2	73	3.68
3	33	5.52
4	18	7.36
5	12	9.20

Luminous flux luminaire  
607 lm

### Electrical

<b>Frequency (Hz)</b>	50-60	<b>Emergency</b>	Without
<b>Voltage (V)</b>	220-240	<b>Insulation class</b>	I
<b>Dimmable</b>	Yes		
<b>Driver</b>	Integrated		
<b>Driver type</b>	Dimmable DALI		
	1		

### Physical

<b>Color</b>	Black
<b>Orientation</b>	Fixed
<b>Weight (kg)</b>	1.80

### Note

During the installation and the maintenance of the fixtures it is important to be careful and avoid damages on the paint coating.

Damages on the coating exposed to outdoor conditions or water, could cause corrosion.

Chemical substances affect the anticorrosion covering protection.

For LED fixtures, there is evidence that most of the damages are connected to electrical effects related to the insulations, which cause destructive electrical discharges

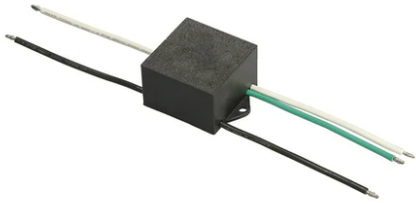
These effects are frequently caused by:

- over voltage coming from the mains' network where fixture is connected.
- electrostatic discharge (ESD) coming from the environment.

The use of a protective device against the overvoltage on the electrical installation is warmly suggest this helps to reduce the intensity of some of these phenomenon and prevent irreversible damages. The selection of the type of device to be used must be adjust on the electrical plant.



## Bellhop Bollard H 850 mm Dali



---

S.P.D. (SURGE PROTECTION DEVICE)  
F990E00A000



---

Base plate with bolt  
F003Z010000



---

2 way terminal block 5 poles IP68.  
( $\varnothing$ 7+12mm cable)  
F990C080000