

## Ara 125X125 230V Transparent Glass

■ 10321723.A.3 - Anthracite



Square luminaire for installation in the ceiling – recessed.

Configuration: die-cast aluminium structure, EN AB-47100 alloy (low copper content). Glass diffuser: transparent or sandblasted fixed to the frame through a robotic gluing system.

Double layer coating for high resistance to corrosion: the aluminium components are painted with a double coat using powders which are compliant with QUALICOAT standards: a first layer of epoxy powder (with excellent chemical and mechanical resistance) and a second finishing layer of polyester powder (resistant to UV rays and atmospheric agents). The entire painting process of the aluminium fitting starts from components which have been sandblasted in advance to make the surface more porous and increase the adherence of the paint. Areas effects alkaline and acid washing to clean the surfaces completely, then rinses with demineralised water to remove any residue particles, subsequently a chemical conversion treatment is done to protect against rusting.

Protection rating: IP65

In compliance with EN 60598-1 standards

Class of insulation: mains: I, low voltage: III, LED module: I,II

Installation: Ara GZ10/GU5,3 125x125: pre-wired with approx. 250mm cable. Ara LED 125x125: prewired with approx. 1000mm cable. Ara LED 250x250: equipped with two M16 plastic cable glands. The luminaire is ready for installation on false-ceiling (up to 30mm thick surfaces). Installation on solid ceiling requires a dedicated metal box to be ordered separately. Outdoor use requires suitable flexible cables assuring the watertightness of the cable gland / connector.

We recommend the use of a connection system with a protection degree greater than or equal to the protection degree of the luminaire.

During the installation and the maintenance of the fixtures it is important to be careful and avoid damages on the paint coating.

Damages on the coating exposed to outdoor conditions or water, could cause corrosion.

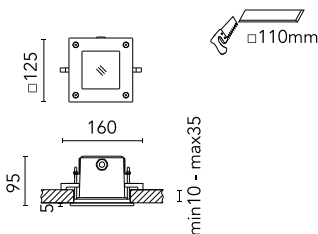
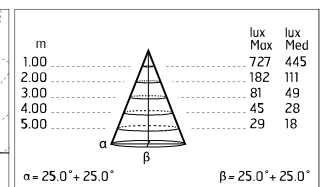
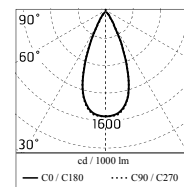
Chemical substances affect the anticorrosion covering protection.

### Main specifications

<b>Power (W)</b>	4.4	<b>Mountings</b>	Ceiling recessed
<b>System power (W)</b>	6	<b>Environment</b>	Outdoor
<b>CCT (K)</b>	4000K		
<b>CRI</b>	80		
<b>Net lumen (lm)</b>	472		

### Optical

<b>Lighting type</b>	Direct
<b>LED type</b>	Power LED
<b>Light distribution</b>	Symmetric
<b>Optical type</b>	Flood



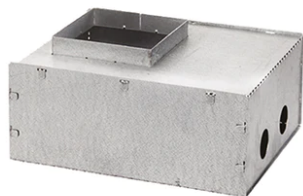
### Electrical

<b>Frequency (Hz)</b>	50-60	<b>Insulation class</b>	II
<b>Voltage (V)</b>	100-240		
<b>Dimmable</b>	No		
<b>Driver type</b>	Not dimmable		
<b>Emergency</b>	Without		

### Physical

<b>Color</b>	Anthracite
--------------	------------

## Ara 125X125 230V Transparent Glass



---

Box for Ceiling Recessed Installation  
Mini Ara  
107



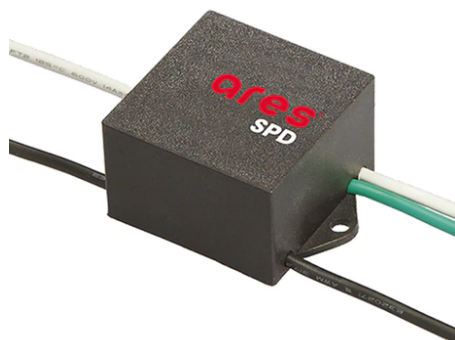
---

3/4 Way Terminal Block 4 Poles Ip68  
H2O Stop  
215



---

2 Way Terminal Block 4 Poles Ip68 H2O  
Stop  
236



---

SPD (Surge Protection Device)  
237