

Andrea Poletop Ø 60 mm

■ 121264112.3 - Anthracite

Pole top luminaire for installation on pole or wall (dedicated wall mounting bracket).

Configuration: die-cast aluminium structure, EN AB-47100 alloy (low copper content), top cover in pre-galvanised sheet (lower side painted in white) secured to the housing by four extruded aluminium brackets. Acrylic diffuser: clear or opal, 3mm thick.

Double layer coating for high resistance to corrosion: the aluminium components are painted with a double coat using powders which are compliant with QUALICOAT standards: a first layer of epoxy powder (with excellent chemical and mechanical resistance) and a second finishing layer of polyester powder (resistant to UV rays and atmospheric agents). The entire painting process of the aluminium fitting starts from components which have been sand-blasted in advance to make the surface more porous and increase the adherence of the paint. Ares effects alkaline and acid washing to clean the surfaces completely, then rinses with demineralised water to remove any residue particles, subsequently a chemical conversion treatment is done to protect against rusting.

Protection rating: IP65

In compliance with EN60598-1 standards

Class of insulation: I; LED module: II

Installation: the fixture is equipped with 1000mm cable. Re-lamping through the removal of a disc fitted on the top cover.

We recommend the use of a connection system with a protection degree greater than or equal to the protection degree of the luminaire.

During the installation and the maintenance of the fixtures it is important to be careful and avoid damages on the paint coating.

Damages on the coating exposed to outdoor conditions or water, could cause corrosion.

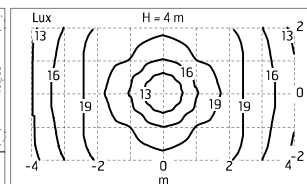
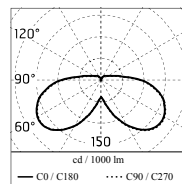
Chemical substances affect the anticorrosion covering protection.

Main specifications

Power (W)	44	Mountings	Pole
System power (W)	49	Environment	Outdoor
CCT (K)	4000K		
CRI	80		
Net lumen (lm)	3596		

Optical

Lighting type	Direct
LED type	Power LED
Light distribution	Symmetric
Optical type	Diffused light



Electrical

Frequency (Hz)	50-60	Insulation class	II
Voltage (V)	220-240		
Dimmable	No		
Driver type	Not dimmable		
Emergency	Without		

Physical

Color	Anthracite
--------------	------------

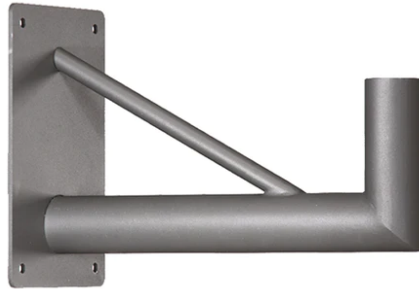
Note

Dimmable version on request

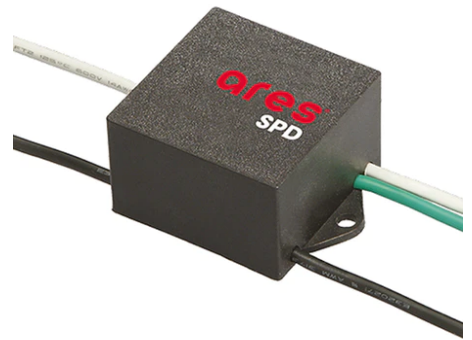
Andrea Poletop Ø 60 mm



2 Way Terminal Block 4 Poles Ip68 H2O
Stop
236



Wall Bracket Perseo 30 1000 mm
125.3



SPD (Surge Protection Device)
237



Pole Ø 102 mm h 4000 mm With Base
4140.3



Pole Ø 102 mm h 4000(+500 mm In-
ground) mm
4145.3



Pole Ø 102 mm h 5000 mm With Base
4150.3



Pole Ø 102 mm h 5000(+500 mm In-
ground) mm
4155.3



Base Plate and Fixing Bolts for Pole Ø
102 mm h 4000/5000 mm with Base
116