



UT Spot Track Wall-Washer Ø 86 GA Dali Version All White

09.7772.30AYU - White

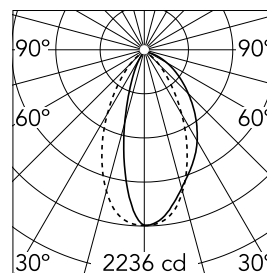
Spotlight to be installed on 3-phase track with LED light source. 220-240V, 50-60Hz power supply integrated. In the "All white" versions, the track adapter, the arm, the rear of the head and the head are white. Only the anti-glare ring is black.

Main specifications

Number of heads	1	CRI	90
Lamp category	LED	Net lumen (lm)	2204
Power (W)	33W	Mountings	Track
System power (W)	33	Environment	Indoor dry location
CCT (K)	4000K		

Optical

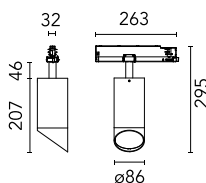
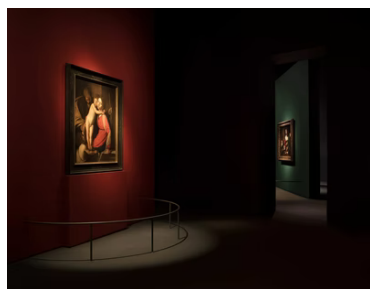
Lighting type	Direct
LED type	LED array
Light distribution	Symmetric
Optical type	Wall Washer
	Down
Beam angle (°)	50
Beam angle C90-270 (°)	50



Beam Angle: 50°

h(m)	E(lx)	D(m)
1	2236	0.98
2	559	1.97
3	248	2.95
4	140	3.94
5	89	4.92

Luminous flux luminaire
2204 lm



Electrical

Frequency (Hz)	50/60	Driver type	Dimmable DALI 1
Voltage (V)	220-240V	Emergency	Without
Current (mA)	900	Insulation class	II
Dimmable	Yes		
Driver	Integrated		

Physical

Color	White	Spot diameter (mm)	86
Orientation	Adjustable		
Weight (kg)	1.05		
Tilt (°)	90		
Rotation (°)	360		

Note

Screening crosspiece, lenses and Honeycomb directly installable on the head of the luminaire without needing any fastening accessory. Installation compatible with Honeycomb + Lense at the same time. FLOS three-phase lighting track luminaires are designed and fully tested for tracks recommended by FLOS. Compatibility is guaranteed with three-phase track produced by Nordic Aluminium. Compatibility with Eutrac under request. FLOS three-phase DALI track luminaires are designed for Pulse DALI from Nordic Aluminium.

