



## UT Spot Track Wall-Washer Ø 86 GA

■ 09.7772.30A - White

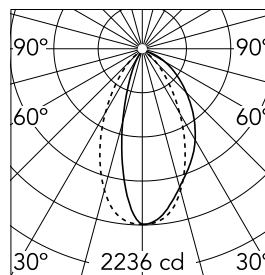
Spotlight to be installed on 3-phase track with LED light source. 220-240V, 50-60Hz power supply integrated. .30 versions come with the track adapter, the arm and the rear of the head in black.

### Main specifications

Number of heads	1	CRI	90
Lamp category	LED	Net lumen (lm)	2204
Power (W)	33W	Mountings	Track
System power (W)	33	Environment	Indoor dry location
CCT (K)	4000K		

### Optical

Lighting type	Direct
LED type	LED array
Light distribution	Symmetric
Optical type	Wall Washer
	Down
Beam angle (°)	50
Beam angle C90-270 (°)	50

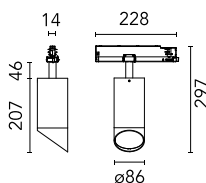
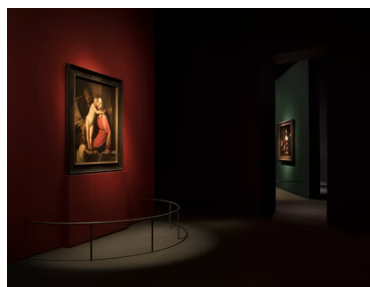


Beam Angle: 50°

h(m) E(lx) D(m)

1	2236	0.98
2	559	1.97
3	248	2.95
4	140	3.94
5	89	4.92

Luminous flux luminaire  
2204 lm



### Electrical

Frequency (Hz)	50/60	Driver type	Non Dimmable
Voltage (V)	220-240V	Emergency	Without
Current (mA)	900	Insulation class	II
Dimmable	No		
Driver	Integrated		

### Physical

Color	White	Spot diameter (mm)	86
Orientation	Adjustable		
Weight (kg)	1.05		
Tilt (°)	90		
Rotation (°)	360		

### Note

Screening crosspiece, lenses and Honeycomb directly installable on the head of the luminaire without needing any fastening accessory. Installation compatible with Honeycomb + Lense at the same time. FLOS three-phase lighting track luminaires are designed and fully tested for tracks recommended by FLOS. Compatibility is guaranteed with three-phase track produced by Nordic Aluminium. Compatibility with Eutrac under request.

