

## Three Phase Track Surface/Pendant 1000 mm

### ■ 60.3101.14 - Matt Black

GLOBAL TRACK offers benefits for advanced installations: the main connectors are feedable and the feeding cable can be hidden under the elegant suspension accessories. GLOBALTRACK lighting tracks are designed for easy surface mounting on ceilings and walls, or recessed mounting insuspended ceilings. Lighting tracks can be suspended at any desired height.

### Main specifications

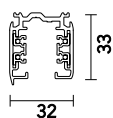
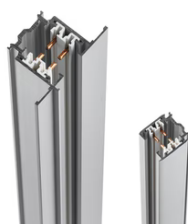
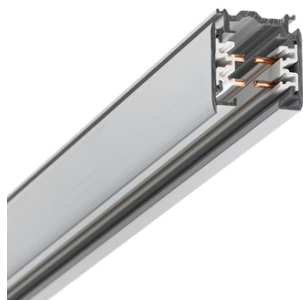
Mountings	Surface and suspension
Environment	Indoor dry location

### Electrical

Emergency	Without
Insulation class	I

### Physical

Color	Matt Black
Weight (kg)	0.80
Length (mm)	1000



## Three Phase Track Surface/Pendant 1000 mm



Bracket  
60.3025.14



Connector 90° Inside  
60.3029.14



Conector T – Outside Right  
60.3049.11



Connector T – Inside Left  
60.3048.11



Power supply rose cover  
60.3092.11



Conector T – Outside Left  
60.3051.14



Dali Flexible connector  
60.3037.11ADA



Track cover strip L 3000 mm  
60.3090.11



Attachment on track for rod  
suspension m6 thread  
60.3018.14




---

Live end right  
60.3038.11




---

Ceiling fitting with rose  
60.3094.14




---

Connector 90° Inside  
60.3029.29




---

Connector 90° Outside  
60.3028.11




---

Live end left  
60.3039.11




---

Corner adjustable connector  
60.3046.29




---

Conector T – Outside Right  
60.3049.14




---

Recessed box for fix-point  
60.3022.14




---

Connector 90° Inside  
60.3029.11



---

Live end left  
60.3039.12



Straight connector  
60.3044.14



Connector 90° Outside  
60.3028.29



---

Bracket for fixing track to wall or ceiling  
60.3093.29



Straight connector  
60.3044.12



Connector T – Inside Left  
60.3048.14



---

Live end right  
60.3038.12



Blind end  
60.3016.11



Fix-point  
60.3023.11



---

1 m suspension rod with ceiling rose

Connector T – Inside Left

Attachment on track for rod

---



Mean connector  
60.3043.11



Corner adjustable connector  
60.3046.14



Bracket  
60.3025.29



Complete wall support 70 mm  
60.3083.29



Live end left  
60.3039.14



Connector T – Inside Right  
60.3047.29



Dali Flexible connector  
60.3037.29ADA



Attachment on track for wire  
suspension  
60.3057.29



Mean connector  
60.3043.14



Mean connector  
60.3043.29

Lead-weighted wire 3000 mm  
60.3096.29

Bracket  
60.3025.11



Live end right  
60.3038.14

Lead bending key  
60.3054

Connector T – Inside Right  
60.3047.14



Conector T – Outside Left  
60.3051.11

Straight connector  
60.3044.11

Dali Flexible connector  
60.3037.14ADA



---

Lead-weighted wire 1500 mm  
60.3095.29

---

Recessed box for fix-point  
60.3022.11

---

Connector T – Inside Right  
60.3047.11



---

Connector 90° Outside  
60.3028.14

---

Conector T – Outside Left  
60.3051.29

---

1 m suspension rod with ceiling rose  
with m6 thread  
60.3097.11



---

Ceiling fitting with rose  
60.3094.11

---

Blind end  
60.3016.12

---

Flexible suspension kit  
60.3008.11





Suspension rod with 1m rose. M6  
thread  
60.3014.11

Attachment on track for wire  
suspension  
60.3057.11



Corner adjustable connector  
60.3046.11



Blind end  
60.3016.14



Suspension rod with 1m rose. M6  
thread  
60.3014.14



Fix-point  
60.3023.14



Fix-point  
60.3023.29



Cross Coupling  
60.3036.29



Cross Coupling



Cross Coupling



