

Three Phase Track Recessed Dali 4000 mm

■ 60.3840.11ADA - Matt White

GLOBALTRACK offers benefits for advanced installations: the main connectors are feedable and the feeding cable can be hidden under the elegant suspension accessories. GLOBALTRACK lighting tracks are designed for easy surface mounting on ceilings and walls, or recessed mounting in suspended ceilings. Lighting tracks can be suspended at any desired height.

Main specifications

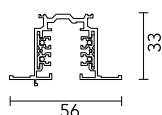
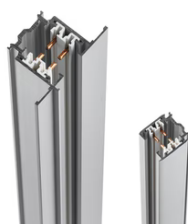
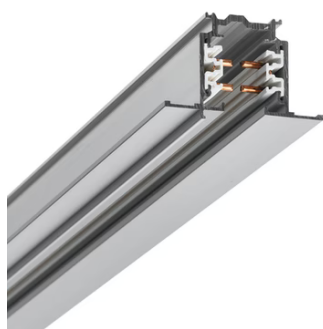
Mountings	Ceiling recessed
Environment	Indoor dry location

Electrical

Emergency	Without
Insulation class	I

Physical

Color	Matt White
Weight (kg)	0.80
Length (mm)	4000



Three Phase Track Recessed Dali 4000 mm



Blind end
60.3016.14



Lead bending key
60.3054



Connector 90° Outside Dali
60.3028.29ADA



Mean connector Dali
60.3043.11ADA



Connector 90° Inside Dali
60.3029.29ADA



Mean connector Dali
60.3043.14ADA



Cross Coupling Dali
60.3036.14ADA



Blind end
60.3016.12



Connector T – Inside Left Dali
60.3048.29ADA



Connector T – Inside Left Dali
60.3048.14ADA

Cover for connectors DALI
60.3146.14

Cross Coupling Dali
60.3036.11ADA



Connector T – Inside Left Dali
60.3048.11ADA

Straight Connector Dali
60.3044.14ADA

Blind end
60.3016.11



Fix-point
60.3023.14

Straight Connector Dali
60.3044.11ADA

Cover for connectors DALI
60.3146.11



Recessed box for fix-point
60.3022.11



Connector T – Inside Right Dali
60.3047.14ADA



Connector 90° Inside Dali
60.3029.11ADA



Fix-point
60.3023.11



Recessed box for fix-point
60.3022.14



Mean connector Dali
60.3043.29ADA



Connector 90° Outside Dali
60.3028.11ADA



Connector 90° Outside Dali
60.3028.14ADA



Connector 90° Inside Dali
60.3029.14ADA



Connector T – Inside Right Dali
60.3047.11ADA

Cover for power supply connectors
recessed track
60.3053.11

Cross Coupling Dali
60.3036.29ADA



Fix-point
60.3023.29



Straight Connector Dali
60.3044.12ADA

Cover for power supply connectors
recessed track
60.3053.14



Connector T – Inside Right Dali
60.3047.29ADA