

Three Phase Track Recessed Dali 1000 mm

■ 60.3810.14ADA - Matt Black

GLOBALTRACK offers benefits for advanced installations: the main connectors are feedable and the feeding cable can be hidden under the elegant suspension accessories. GLOBALTRACK lighting tracks are designed for easy surface mounting on ceilings and walls, or recessed mounting in suspended ceilings. Lighting tracks can be suspended at any desired height.

Main specifications

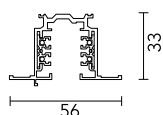
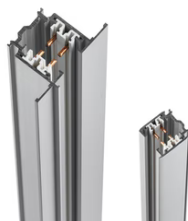
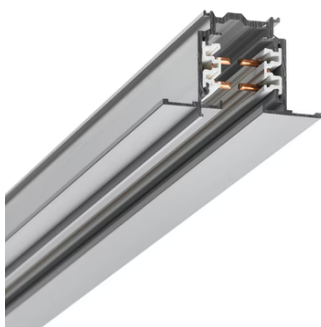
Mountings	Ceiling recessed
Environment	Indoor dry location

Electrical

Emergency	Without
Insulation class	I

Physical

Color	Matt Black
Weight (kg)	0.80
Length (mm)	1000



Three Phase Track Recessed Dali 1000 mm



Connector 90° Inside Dali
60.3029.14ADA

Mean connector Dali
60.3043.14ADA

Cross Coupling Dali
60.3036.29ADA



Recessed box for fix-point
60.3022.11

Straight Connector Dali
60.3044.14ADA

Connector 90° Inside Dali
60.3029.29ADA



Recessed box for fix-point
60.3022.14

Cross Coupling Dali
60.3036.14ADA

Connector T – Inside Right Dali
60.3047.11ADA



Connector T – Inside Left Dali
60.3048.29ADA



Connector 90° Outside Dali
60.3028.11ADA



Lead bending key
60.3054



Connector 90° Outside Dali
60.3028.14ADA



Blind end
60.3016.14



Connector T – Inside Right Dali
60.3047.29ADA



Connector 90° Outside Dali
60.3028.29ADA



Straight Connector Dali
60.3044.11ADA



Fix-point
60.3023.29



Connector T – Inside Left Dali
60.3048.14ADA



Fix-point
60.3023.14



Cover for connectors DALI
60.3146.11



Straight Connector Dali
60.3044.12ADA



Mean connector Dali
60.3043.29ADA



Cover for power supply connectors
recessed track
60.3053.14



Mean connector Dali
60.3043.11ADA



Cross Coupling Dali
60.3036.11ADA



Connector 90° Inside Dali
60.3029.11ADA



Blind end
60.3016.11

Cover for power supply connectors
recessed track
60.3053.11

Connector T – Inside Right Dali
60.3047.14ADA



Connector T – Inside Left Dali
60.3048.11ADA



Blind end
60.3016.12



Fix-point
60.3023.11



Cover for connectors DALI
60.3146.14