

## Three Phase Track Recessed 3000 mm

### ■ 60.3830.14 - Matt Black

GLOBALTRACK offers benefits for advanced installations: the main connectors are feedable and the feeding cable can be hidden under the elegant suspension accessories. GLOBALTRACK lighting tracks are designed for easy surface mounting on ceilings and walls, or recessed mounting in suspended ceilings. Lighting tracks can be suspended at any desired height.

### Main specifications

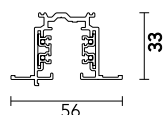
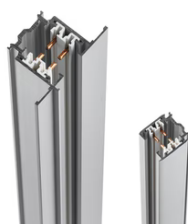
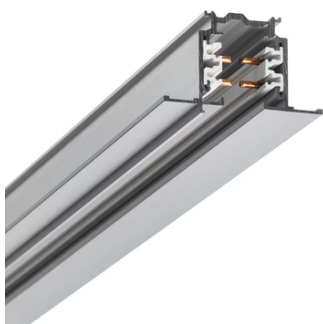
<b>Mountings</b>	Ceiling recessed
<b>Environment</b>	Indoor dry location

### Electrical

<b>Emergency</b>	Without
<b>Insulation class</b>	I

### Physical

<b>Color</b>	Matt Black
<b>Weight (kg)</b>	3
<b>Length (mm)</b>	3000



## Three Phase Track Recessed 3000 mm



Live end right  
60.3038.14



Lead bending key  
60.3054



Connector T – Inside Right  
60.3047.11



Live end left  
60.3039.11



Straight connector  
60.3044.11



Conector T – Outside Left  
60.3051.11



Recessed box for fix-point  
60.3022.11



Connector 90° Outside  
60.3028.14



Cover for power supply connectors  
recessed track  
60.3053.11



Mean connector  
60.3043.14



Conector T – Outside Left  
60.3051.14



Live end left  
60.3039.12



Connector T – Inside Left  
60.3048.29



Cover for connectors DALI  
60.3146.14



Connector 90° Outside  
60.3028.29



Recessed box for fix-point  
60.3022.14



Mean connector  
60.3043.11



Connector T – Inside Left  
60.3048.11



---

Connector 90° Inside  
60.3029.14



Cross Coupling  
60.3036.14



Fix-point  
60.3023.29



---

Corner adjustable connector  
60.3046.11



Live end left  
60.3039.14



Cover for connectors DALI  
60.3146.11



---

Conector T – Outside Left  
60.3051.29



Connector T – Inside Left  
60.3048.14



Conector T – Outside Right  
60.3049.14



---

Conector T – Outside Right  
60.3049.11

Fix-point  
60.3023.11

Connector T – Inside Right  
60.3047.29



---

Live end right  
60.3038.11



---

Connector 90° Inside  
60.3029.29



---

Corner adjustable connector  
60.3046.29



---

Fix-point  
60.3023.14



---

Dali Flexible connector  
60.3037.14ADA



---

Connector T – Inside Right  
60.3047.14



---

Mean connector  
60.3043.29



---

Straight connector  
60.3044.14



---

Cross Coupling  
60.3036.29



Blind end  
60.3016.14



Corner adjustable connector  
60.3046.14



Blind end  
60.3016.12



Blind end  
60.3016.11



Connector 90° Inside  
60.3029.11



Cross Coupling  
60.3036.11



Live end right  
60.3038.12



Dali Flexible connector  
60.3037.11ADA



Connector 90° Outside  
60.3028.11



---

Cover for power supply connectors  
recessed track  
60.3053.14



---

Straight connector  
60.3044.12

---

Dali Flexible connector  
60.3037.29ADA