

Three Phase Track Recessed 2000 mm

60.3820.29 - Aluminum

GLOBALTRACK offers benefits for advanced installations: the main connectors are feedable and the feeding cable can be hidden under the elegant suspension accessories. GLOBALTRACK lighting tracks are designed for easy surface mounting on ceilings and walls, or recessed mounting in suspended ceilings. Lighting tracks can be suspended at any desired height.

Main specifications

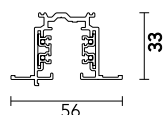
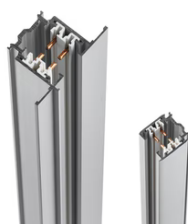
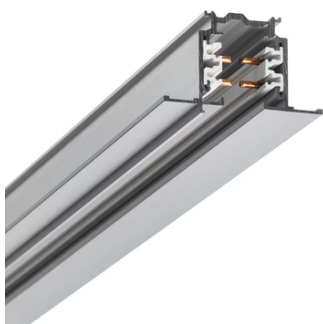
| | |
|--------------------|---------------------|
| Mountings | Ceiling recessed |
| Environment | Indoor dry location |

Electrical

| | |
|-------------------------|---------|
| Emergency | Without |
| Insulation class | I |

Physical

| | |
|--------------------|----------|
| Color | Aluminum |
| Weight (kg) | 2 |
| Length (mm) | 2000 |



Three Phase Track Recessed 2000 mm



Mean connector
60.3043.14

Recessed box for fix-point
60.3022.14

Connector T – Inside Right
60.3047.29



Blind end
60.3016.12

Straight connector
60.3044.11

Corner adjustable connector
60.3046.11



Corner adjustable connector
60.3046.14

Conector T – Outside Right
60.3049.14

Dali Flexible connector
60.3037.29ADA



Connector 90° Outside
60.3028.11



Connector T – Inside Left
60.3048.11



Fix-point
60.3023.14



Conector T – Outside Left
60.3051.29



Blind end
60.3016.14



Live end left
60.3039.14



Live end right
60.3038.14



Connector 90° Inside
60.3029.29



Live end right
60.3038.12



Cover for power supply connectors
recessed track

60.3053.11



Cross Coupling
60.3036.29

Cover for power supply connectors
recessed track
60.3053.14

Corner adjustable connector
60.3046.29



Blind end
60.3016.11

Connector T – Inside Right
60.3047.11

Cover for connectors DALI
60.3146.11



Cross Coupling

Cover for connectors DALI

Connector 90° Outside



Recessed box for fix-point
60.3022.11



Conector T – Outside Left
60.3051.11



Conector T – Outside Right
60.3049.11



Lead bending key
60.3054



Conector T – Outside Left
60.3051.14



Connector 90° Outside
60.3028.14



Connector T – Inside Left
60.3048.29



Dali Flexible connector
60.3037.14ADA



Fix-point
60.3023.29



Straight connector
60.3044.12



Connector 90° Inside
60.3029.14



Live end left
60.3039.11



Connector 90° Inside
60.3029.11



Mean connector
60.3043.11



Connector T – Inside Left
60.3048.14



Connector T – Inside Right
60.3047.14



Live end right
60.3038.11



Cross Coupling
60.3036.11



Dali Flexible connector
60.3037.11ADA

Live end left
60.3039.12

Mean connector
60.3043.29