

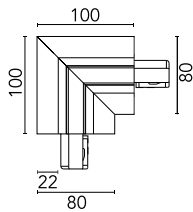
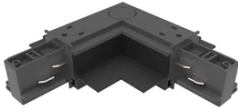
The Tracking Power Recessed 90° Corner Right

■ 06.1804.14 - Black

Three-phase track with minimum impact on the architecture (15 mm) for embedded installations in plasterboard ceilings. With electrical feeding connection.

Three-phase track with minimum impact on the architecture (15 mm) for embedded installations in plasterboard ceilings.

With electrical feeding connection.



Main specifications

| | |
|--------------------|---------------------|
| Mountings | Ceiling recessed |
| Environment | Indoor dry location |

Electrical

| | |
|-------------------------|---------|
| Voltage (V) | 220.00 |
| Emergency | Without |
| Insulation class | I |

Physical

| | |
|--------------------|-------|
| Color | Black |
| Weight (kg) | 0.15 |
| Length (mm) | 100 |

Note

90° corners on the same plane are also available (different elements for the left and right corners). A linear intermediate connector is required to connect several profiles. Power supply connectors available for the installation on the left or right-hand side. Endcaps included in the power supply connectors. The fastening of the Tracking Power is performed by screwing the sides of the profile to the plasterboard surface, aided by aluminium fastening profiles. The adjustable ceiling fastening Kit (optional) permits the installation without the need for fastening aluminium profiles. Recommended for installations where the Tracking Power profile can be installed before the suspended plasterboard. Use two units per metre.

