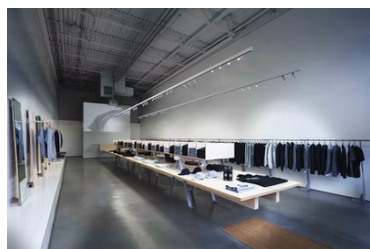
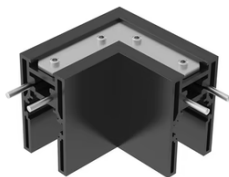


## The Tracking Magnet Suspension Up&Down Profile 90° Mechanical Corner

■ 06.5025.14 - Black

Two end suspension connections included. Steel cable not included. No lighting on the upper part. Upper part connections included.



### Main specifications

<b>Mountings</b>	Suspension
<b>Environment</b>	Indoor dry location

### Electrical

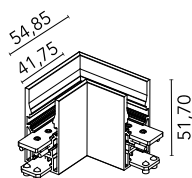
<b>Voltage (V)</b>	48
<b>Current (mA)</b>	35
<b>Dimmable</b>	Yes
<b>Emergency</b>	Without

### Physical

<b>Color</b>	Black
<b>Weight (kg)</b>	0.17
<b>Length (mm)</b>	55

### Note

90° mechanical corner.



GWT  
850°

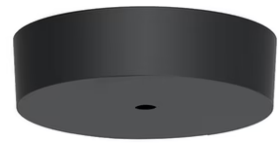
## The Tracking Magnet Suspension Up&Down Profile 90° Mechanical Corner



Recessed power supply rose  
08.8889.40



1 m suspension rod with ceiling rose  
with m6 thread  
60.3097.14



Surface rose  
08.8883.40A



Recessed power supply rose  
08.8889.14



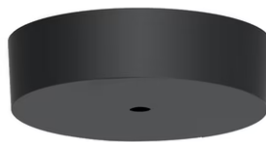
Suspension rod with 1m rose. M6  
thread  
60.3014.14



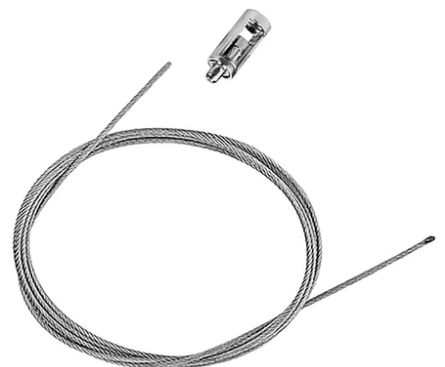
1 m suspension rod with ceiling rose  
with m6 thread  
60.3097.11



The Tracking Magnet Suspension  
Up&Down Profile End Caps  
06.5026.14



Surface rose  
08.8883.14A



4m suspension steel cable  
08.8634.00



---

The Tracking Magnet Profile  
Intermediate Connector  
Flexible/Electrical Corner  
08.0614.14



---

Suspension rod with 1m rose. M6  
thread  
60.3014.11