



## The Tracking Magnet Surface/Suspension Profile Casambi / On Board Dimmer compatible

06.5064.40 - White

Electromechanical profile for surface-mounting, available in lengths from 1m to 3m.

### Main specifications

Mountings	Surface and suspension
Environment	Indoor dry location

### Electrical

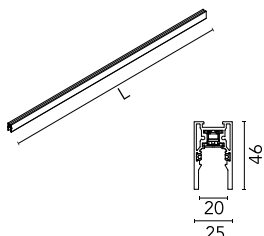
Voltage (V)	48
Dimmable	Yes
Driver	Remote
Driver type	Dimmer on board, Dimmable Casambi
Emergency	Without

### Physical

Color	White
Weight (kg)	3.65
Length (mm)	3000

### Note

Version compatible with "On board dimmer" luminaries and version compatible with system controlled luminaries (DALI, 1-10V, FLOS SMART CONTROL) available. Corners, connectors and accessories common for the two profile versions. Feed connector, intermediated connector, end-caps and attachment accessories to be ordered separately. Mechanical 90° corners available in the same plane (symmetrical element for left and right corner) and 90° symmetrical internal corners in a different plane. Intermediate connectors to be ordered separately if electrical continuity on corners is required. Corners do not admit installation of spots.



The Tracking Magnet Surface/Suspension Profile Casambi / On Board Dimmer compatible



Ceiling fixing kit  
08.0615.00



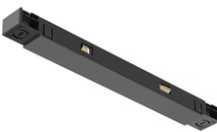
Recessed power supply rose  
08.8889.40



LED power supply source for remote installation, 48V/120W. 220/240 Vac  
60.9170



1 m suspension rod with ceiling rose with m6 thread  
60.3097.11



The Tracking Magnet Profile Intermediate Connector Straight  
08.0612.14



Ceiling fixing kit  
08.0616.00



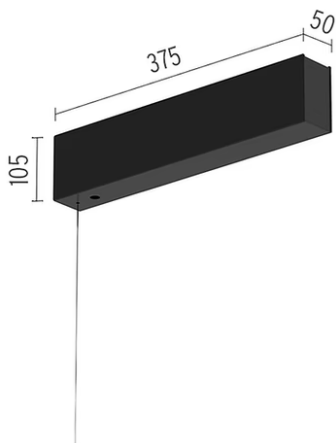
Suspension rod with 1m rose. M6 thread  
60.3014.14



The Tracking Magnet Profile Feed Connector  
08.0611.14



1 m suspension rod with ceiling rose with m6 thread  
60.3097.14



Surface power supply with 320W /  
48Vdc driver included  
08.0600.14



Surface rose  
08.8883.40A



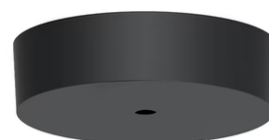
Recessed power supply rose  
08.8889.14



LED Power Supply Source for remote  
installation. 48V. 100Vac (150W)-240Vac  
(200W)  
60.9607



4-pole, 0.75 mm2 section, 4-meter long,  
transparent power cable  
06.0157.00



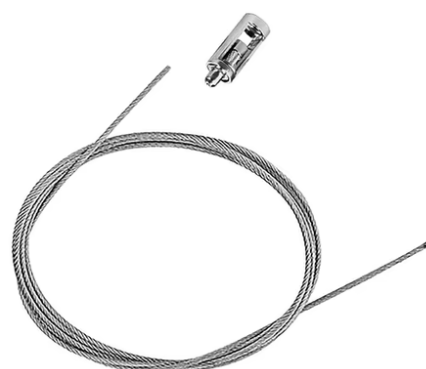
Surface rose  
08.8883.14A



LED Power Supply Source for remote  
installation. 48V/320W. 100/240 Vac  
60.8919



The Tracking Magnet  
Surface/Suspension Profile End Caps  
06.5017.40

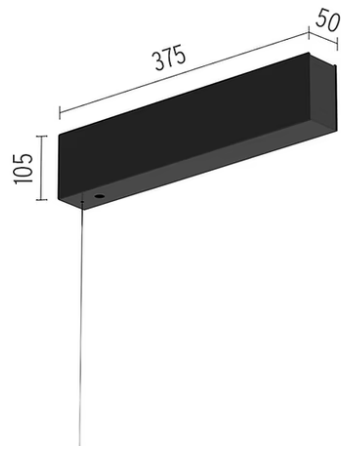


4m suspension steel cable  
08.8634.00



---

Suspension rod with 1m rose. M6  
thread  
60.3014.11



---

Surface power supply with 320W /  
48Vdc driver included  
08.0600.40