

The Tracking Magnet Surface/Suspension Profile Casambi / Dali / 1-10V compatible

■ 06.5010.14 - Black

Electromechanical profile for surface-mounting, available in lengths from 1m to 3m.

Main specifications

Mountings	Surface and suspension
Environment	Indoor dry location

Electrical

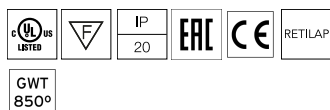
Voltage (V)	48
Dimmable	Yes
Driver	Remote excluded
Driver type	Dimmable Casambi, Dimmable 1-10V, Dimmable DALI 1
Emergency	Without

Physical

Color	Black
Weight (kg)	1.22
Length (mm)	1000

Note

Version compatible with "On board dimmer" luminaries and version compatible with system controlled luminaries (DALI, 1-10V, FLOS SMART CONTROL) available. Corners, connectors and accessories common for the two profile versions. Feed connector, intermediated connector, end-caps and attachment accessories to be ordered separately. Mechanical 90° corners available in the same plane (symmetrical element for left and right corner) and 90° symmetrical internal corners in a different plane. Intermediate connectors to be ordered separately if electrical continuity on corners is required. Corners do not admit installation of spots.



The Tracking Magnet Surface/Suspension Profile Casambi / Dali / 1-10V compatible



1 m suspension rod with ceiling rose with m6 thread
60.3097.14



Ceiling fixing kit
08.0615.00



Surface rose
08.8883.40A



Recessed power supply rose
08.8889.14



Ceiling fixing kit
08.0616.00



Dimmable control box 1-10V 48V
08.0613.14A



Surface rose
08.8883.14A



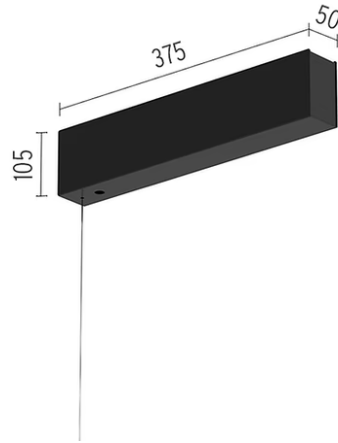
Suspension rod with 1m rose. M6 thread
60.3014.11



LED Power Supply Source for remote installation. 48V. 100Vac (150W)-240Vac (200W)
60.9607



LED Power Supply Source for remote installation. 48V/320W. 100/240 Vac
60.8919



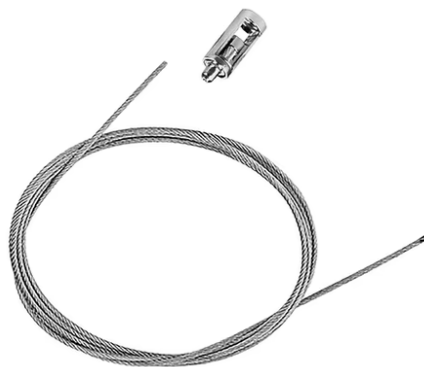
Surface power supply with 320W / 48Vdc driver included
08.0600.40



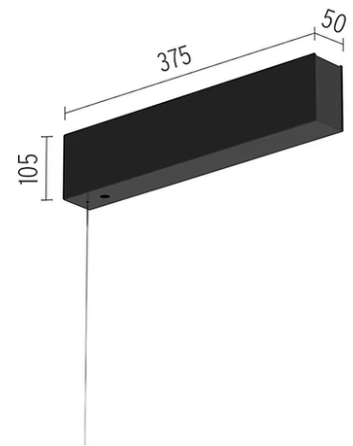
The Tracking Magnet Surface/Suspension Profile End Caps
06.5017.14



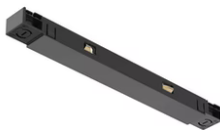
Recessed power supply rose
08.8889.40



4m suspension steel cable
08.8634.00



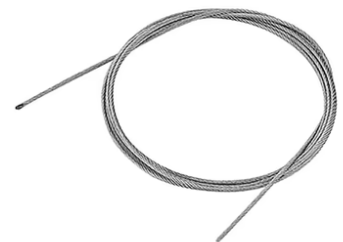
Surface power supply with 320W / 48Vdc driver included
08.0600.14



The Tracking Magnet Profile Intermediate Connector Straight
08.0612.14



LED power supply source for remote installation, 48V/120W. 220/240 Vac
60.9170



4-pole, 0.75 mm2 section, 4-meter long, transparent power cable
06.0157.00



Suspension rod with 1m rose. M6
thread
60.3014.14



1 m suspension rod with ceiling rose
with m6 thread
60.3097.11



The Tracking Magnet Profile Feed
Connector
08.0611.14