

## The Tracking Magnet Surface/Suspension Profile Casambi / Dali / 1-10V compatible

■ 06.5010.05 - Polished Aluminium

Electromechanical profile for surface-mounting, available in lengths from 1m to 3m.

### Main specifications

<b>Mountings</b>	Surface and suspension
<b>Environment</b>	Indoor dry location

### Electrical

<b>Voltage (V)</b>	48
<b>Dimmable</b>	Yes
<b>Driver</b>	Remote excluded
<b>Driver type</b>	Dimmable Casambi, Dimmable 1-10V, Dimmable DALI 1
<b>Emergency</b>	Without

### Physical

<b>Color</b>	Polished Aluminium
<b>Weight (kg)</b>	1.22
<b>Length (mm)</b>	1000

### Note

Version compatible with "On board dimmer" luminaries and version compatible with system controlled luminaries (DALI, 1-10V, FLOS SMART CONTROL) available. Corners, connectors and accessories common for the two profile versions. Feed connector, intermediated connector, end-caps and attachment accessories to be ordered separately. Mechanical 90° corners available in the same plane (symmetrical element for left and right corner) and 90° symmetrical internal corners in a different plane. Intermediate connectors to be ordered separately if electrical continuity on corners is required. Corners do not admit installation of spots.



## The Tracking Magnet Surface/Suspension Profile Casambi / Dali / 1-10V compatible



Ceiling fixing kit  
08.0616.00



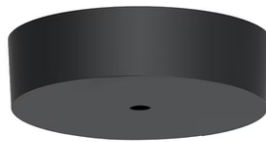
Dimmable control box 1-10V 48V  
08.0613.14A



Ceiling fixing kit  
08.0615.00



The Tracking Magnet  
Surface/Suspension Profile End Caps  
06.5017.05



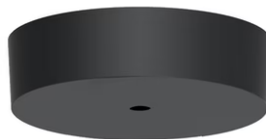
Surface rose  
08.8883.40A



Recessed power supply rose  
08.8889.14



1 m suspension rod with ceiling rose  
with m6 thread  
60.3097.14



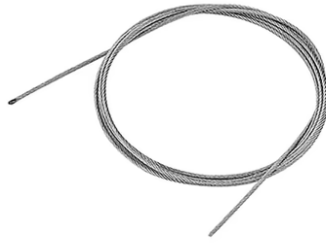
Surface rose  
08.8883.14A



Suspension rod with 1m rose. M6  
thread  
60.3014.11



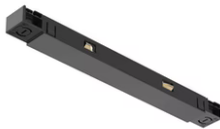
LED Power Supply Source for remote installation. 48V. 100Vac (150W)-240Vac (200W)  
60.9607



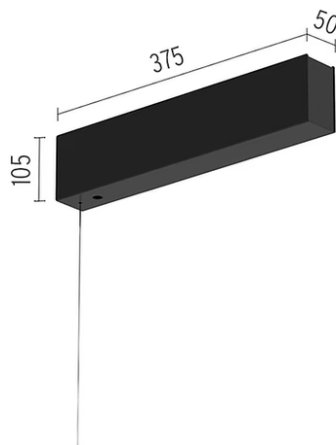
4-pole, 0.75 mm<sup>2</sup> section, 4-meter long, transparent power cable  
06.0157.00



LED Power Supply Source for remote installation. 48V/320W. 100/240 Vac  
60.8919



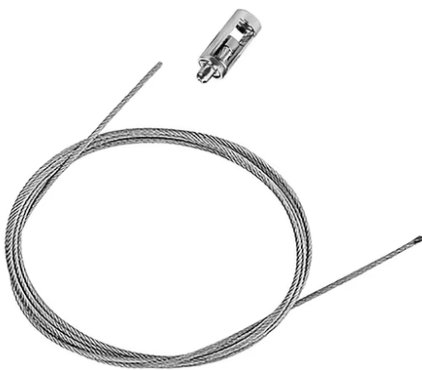
The Tracking Magnet Profile Intermediate Connector Straight  
08.0612.14



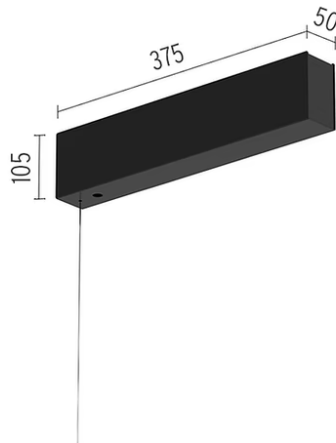
Surface power supply with 320W / 48Vdc driver included  
08.0600.40



Recessed power supply rose  
08.8889.40



4m suspension steel cable  
08.8634.00



Surface power supply with 320W / 48Vdc driver included  
08.0600.14



LED power supply source for remote installation, 48V/120W. 220/240 Vac  
60.9170



---

Suspension rod with 1m rose. M6  
thread  
60.3014.14



---

1 m suspension rod with ceiling rose  
with m6 thread  
60.3097.11



---

The Tracking Magnet Profile Feed  
Connector  
08.0611.14