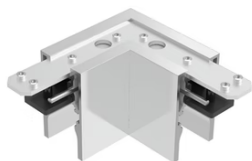


The Tracking Magnet Surface/Suspension Profile 90° Mechanical Corner

■ 06.5015.05 - Polished Aluminium

Electromechanical profile for surface-mounting, available in lengths from 1m to 3m.



Main specifications

Mountings	Surface and suspension
Environment	Indoor dry location

Electrical

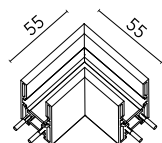
Voltage (V)	48
Emergency	Without

Physical

Color	Polished Aluminium
Weight (kg)	0.14
Length (mm)	55

Note

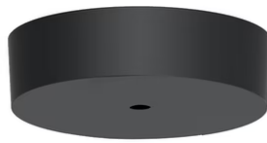
90° mechanical corner. To create electrical continuity, order with the flexible intermediate connector.



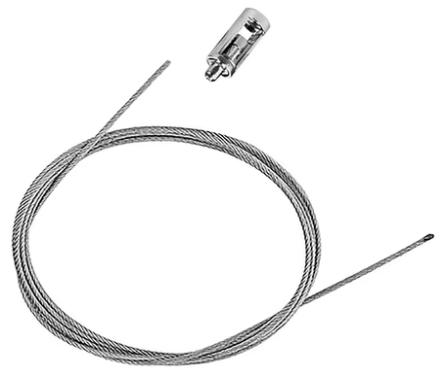
The Tracking Magnet Surface/Suspension Profile 90° Mechanical Corner



Suspension rod with 1m rose. M6
thread
60.3014.11



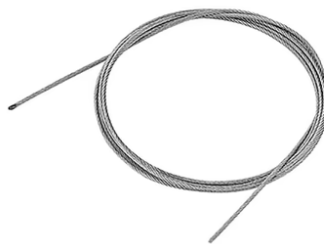
Surface rose
08.8883.14A



4m suspension steel cable
08.8634.00



1 m suspension rod with ceiling rose
with m6 thread
60.3097.11



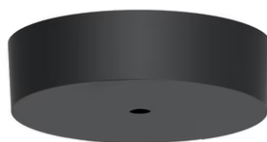
4-pole, 0.75 mm² section, 4-meter long,
transparent power cable
06.0157.00



Recessed power supply rose
08.8889.40



Suspension rod with 1m rose. M6
thread
60.3014.14



Surface rose
08.8883.40A



Recessed power supply rose
08.8889.14



Ceiling fixing kit
08.0616.00



1 m suspension rod with ceiling rose
with m6 thread
60.3097.14



The Tracking Magnet Profile
Intermediate Connector
Flexible/Electrical Corner
08.0614.14



The Tracking Magnet
Surface/Suspension Profile End Caps
06.5017.05



Ceiling fixing kit
08.0615.00