

The Tracking Magnet Recessed Profile Casambi / On Board Dimmer compatible

■ 06.5051.14 - Black

Electromechanical profile for recessed installation in plasterboard ceilings and walls, available in lengths from 1m to 3m.

Main specifications

Mountings	Recessed
Environment	Indoor dry location

Electrical

Voltage (V)	48
Dimmable	Yes
Driver	Remote
Driver type	Dimmer on board, Dimmable Casambi
Emergency	Without

Physical

Color	Black
Recessed depth (mm)	45
Weight (kg)	1.87
Length (mm)	1500

Note

Version compatible with "On board dimmer" luminaries and version compatible with system controlled luminaries (DALI, 1-10V, FLOS SMART CONTROL) available. Corners, connectors and accessories common for the two profile versions. Feed connector, intermediated connector and end-caps to be ordered separately. Mechanical 90° corners available in the same plane (symmetrical element for left and right corners), symmetrical 90° inner and outer corners in different planes. Intermediate connectors to be ordered separately if electrical continuity on corners is required. Corners do not admit installation of spots. Fixed or adjustable fastening kits available (optional). The fastening kits for the roof permit installing without using aluminium fastening profiles. Recommended for installations where the Tracking Magnet can be installed before the suspended plasterboard ceiling.

The Tracking Magnet Recessed Profile Casambi / On Board Dimmer compatible



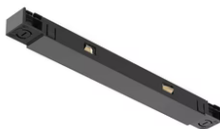
Fixed ceiling kit. 2 unit kit
08.8866.14



LED power supply source for remote installation, 48V/120W. 220/240 Vac
60.9170



The Tracking Magnet Profile Feed Connector
08.0611.14



The Tracking Magnet Profile Intermediate Connector Straight
08.0612.14



LED Power Supply Source for remote installation. 48V/320W. 100/240 Vac
60.8919



The Tracking Magnet Recessed Profile End Caps
06.5008.14



Adjustable ceiling kit. 2 unit kit
08.8867.14



LED Power Supply Source for remote installation. 48V. 100Vac (150W)-240Vac (200W)
60.9607