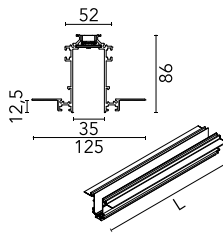


The Running Magnet Recessed Intermediate Profile

■ 06.1645.14 - Black

Electromechanical track for recessed installation in plasterboard ceilings and walls. Linear tracks available in two versions: power feed profiles for connecting to a driver, and intermediate profiles.



Main specifications

Mountings	Recessed
Environment	Indoor

Electrical

Voltage (V)	24.00
Emergency	Without

Physical

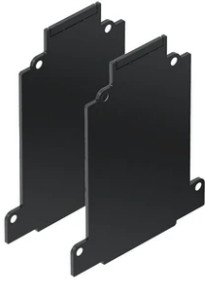
Color	Black
Recessed depth (mm)	121
Weight (kg)	5.60
Length (mm)	2000

Note

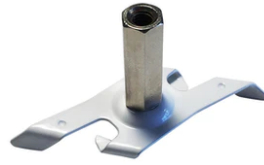
The Recessed version can only be installed on 12.5 mm thick plasterboard surfaces. Covers included with the power feed profiles. 90° corners available in the same plane (symmetrical element for left and right corners), symmetrical 90° inner and outer corners in different planes. Permanent or adjustable fastening kits available (optional). The fastening kits for the roof permit installing without using aluminium fastening profiles. Recommended for installations where the Running Magnet 2.0 cannot be installed before the suspended plasterboard ceiling (use 3 units).



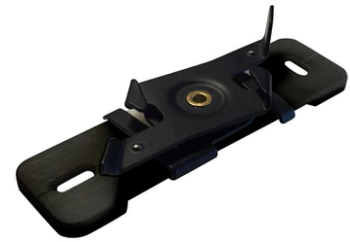
The Running Magnet Recessed Intermediate Profile



Endcap. 2 unit kit
08.8865.14A



Adjustable ceiling kit. 2 unit kit
08.8867.14



Fixed ceiling kit. 2 unit kit
08.8866.14