



## Pure Spot Pro Track

■ 09.2432.14C - Black

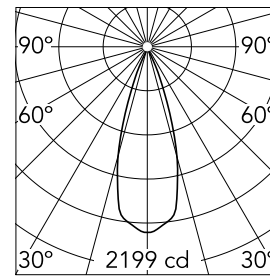
Spotlight to be installed on 3-phase track with LED light source. Electronic transformer 220/240V, 50/60Hz for phosphor LED integrated.

### Main specifications

<b>Number of heads</b>	1	<b>Net lumen (lm)</b>	693
<b>Lamp category</b>	LED	<b>Mountings</b>	Track
<b>Power (W)</b>	19.5W	<b>Environment</b>	Indoor
<b>CCT (K)</b>	3000K		
<b>CRI</b>	80		

### Optical

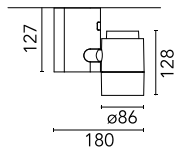
<b>Lighting type</b>	Direct
<b>LED type</b>	Phosphor LED
<b>Light distribution</b>	Symmetric
<b>Optical type</b>	Flood
<b>Beam angle (°)</b>	34
<b>Beam angle C90-270 (°)</b>	34



Beam Angle: 34°

h(m)	E(lx)	D(m)
1	2199	0.61
2	550	1.22
3	244	1.83
4	137	2.44
5	88	3.05

Luminous flux luminaire  
693 lm



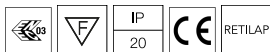
### Electrical

<b>Frequency (Hz)</b>	50/60	<b>Insulation class</b>	I
<b>Dimmable</b>	No		
<b>Driver</b>	Integrated		
<b>Driver type</b>	Electronic		
<b>Emergency</b>	Without		

### Physical

<b>Color</b>	Black
<b>Orientation</b>	Adjustable
<b>Weight (kg)</b>	1.40
<b>Tilt (°)</b>	90
<b>Rotation (°)</b>	180

### Certification / Marking

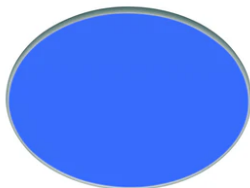


## Pure Spot Pro Track



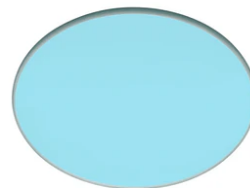
---

Flood lens  
08.8175.68



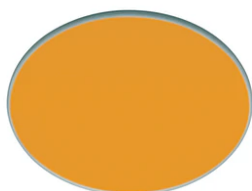
---

Blue filter  
08.8160.64.OD



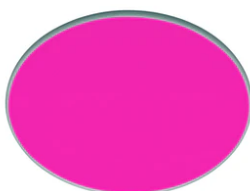
---

Sky blue filter  
08.8160.65.OD



---

Amber filter  
08.8160.66.OD



---

Red filter  
08.8160.67.OD



---

I.R. filter  
08.8160.68



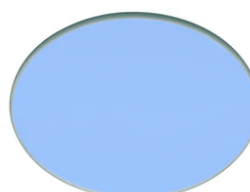
---

Hot Light  
08.8160.69



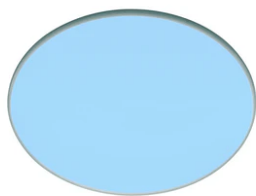
---

U.V. filter  
08.8160.98.OD



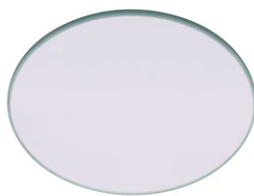
---

Cold light filter  
08.8160.CL



---

Daylight filter  
08.8160.DL



---

Neodimium  
08.8160.ND



---

Elliptical lens  
08.8163.68



---

Honeycomb  
08.8186.14