

## Pure 1 Spot Pro Ceiling

09.2485.30A - White

Spotlight to be installed on ceiling/wall with LED light source. 220/240V, 50/60Hz power supply integrated.

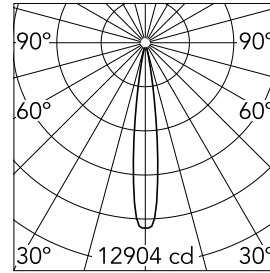


### Main specifications

<b>Number of heads</b>	1	<b>Net lumen (lm)</b>	967
<b>Lamp category</b>	LED	<b>Mountings</b>	Ceiling surface
<b>Power (W)</b>	15.7W	<b>Environment</b>	Indoor
<b>CCT (K)</b>	3000K		
<b>CRI</b>	80		

### Optical

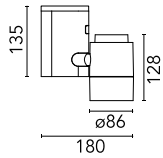
<b>Lighting type</b>	Direct
<b>LED type</b>	Power LED
<b>Light distribution</b>	Symmetric
<b>Optical type</b>	Spot
<b>Beam angle (°)</b>	14
<b>Beam angle C90-270 (°)</b>	14



Beam Angle: 14°

	h(m)	E(lx)	D(m)
1	12904	0.25	
2	3226	0.50	
3	1434	0.75	
4	806	1.01	
5	516	1.26	

Luminous flux luminaire  
967 lm



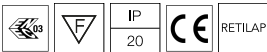
### Electrical

<b>Frequency (Hz)</b>	50/60	<b>Insulation class</b>	I
<b>Dimmable</b>	No		
<b>Driver</b>	Integrated		
<b>Driver type</b>	Electronic		
<b>Emergency</b>	Without		

### Physical

<b>Color</b>	White
<b>Orientation</b>	Adjustable
<b>Weight (kg)</b>	1.40
<b>Tilt (°)</b>	90
<b>Rotation (°)</b>	180

### Certification / Marking

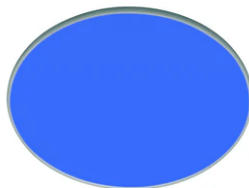


## Pure 1 Spot Pro Ceiling



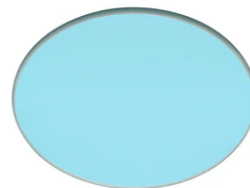
---

Flood lens  
08.8175.68



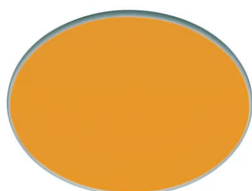
---

Blue filter  
08.8160.64.OD



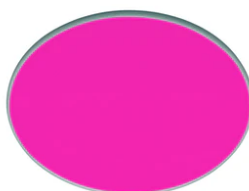
---

Sky blue filter  
08.8160.65.OD



---

Amber filter  
08.8160.66.OD



---

Red filter  
08.8160.67.OD



---

I.R. filter  
08.8160.68



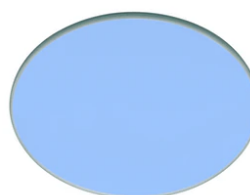
---

Hot Light  
08.8160.69



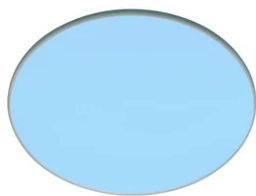
---

U.V. filter  
08.8160.98.OD



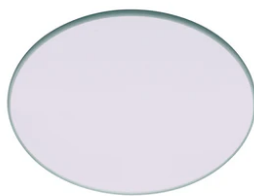
---

Cold light filter  
08.8160.CL



---

Daylight filter  
08.8160.DL



---

Neodimium  
08.8160.ND



---

Elliptical lens  
08.8163.68



---

Honeycomb  
08.8186.14