

Light Stripe Wall-Washer

■ 03.2291.14 - Black

Asymmetric wall-washer LED light module to be installed in The Micro Running Magnet System.

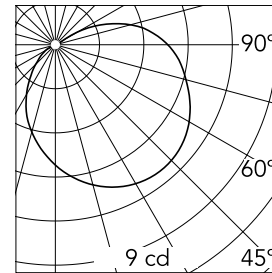


Main specifications

Number of heads	1	Net lumen (lm)	611
Lamp category	LED	Mountings	Track
Power (W)	15W	Environment	Indoor
CCT (K)	5000K		
CRI	90		

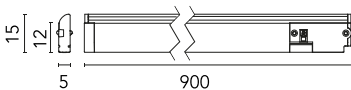
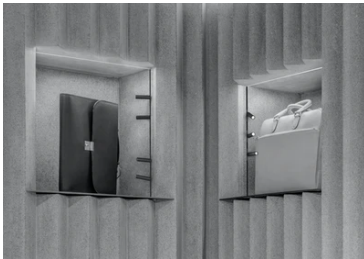
Optical

Lighting type	Direct
LED type	Top LED
Light distribution	Asymmetric
Optical type	Wall-washer



Beam Angle:		
h(m)	E(lx)	D(m)
1	9	
2	15	
3	35	
4	138	
5	0	

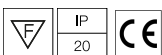
Luminous flux luminaire
611 lm



Electrical

Dimmable	Yes
Driver	remote excluded
Driver type	Electronic, Electronic dimmable CASAMBI, Electronic dimmable 1- 10V, Electronic dimmable DALI
Emergency	Without
Insulation class	III

Certification / Marking



Physical

Color	Black
Orientation	Fixed
Weight (kg)	0,09
Length (mm)	900