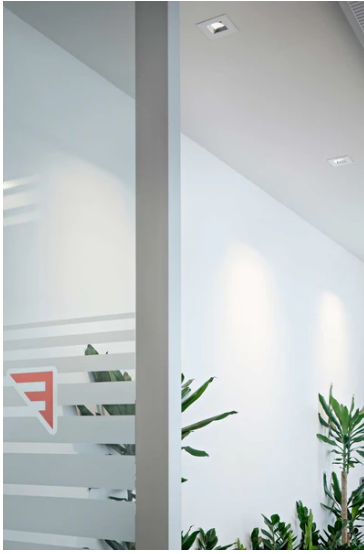


Light Sniper Wall-Washer Square Dimmable

03.4991.06.DA - Chrome

High-performance recessed luminaire with LED light source. Remote 220-240V power supply included.

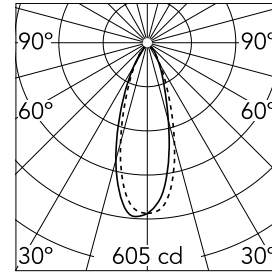


Main specifications

| | | | |
|------------------------|-------|-----------------------|---------------------|
| Number of heads | 1 | Net lumen (lm) | 316 |
| Lamp category | LED | Mountings | Ceiling recessed |
| Power (W) | 11W | Environment | Indoor dry location |
| CCT (K) | 2700K | | |
| CRI | 90 | | |

Optical

| | |
|-------------------------------|------------------|
| Lighting type | Indirect, Direct |
| LED type | Power LED |
| Light distribution | Asymmetric |
| Optical type | Wall Washer |
| | Down |
| Beam angle (°) | 34 |
| Beam angle C90-270 (°) | 36 |



| | | |
|------------------------|--------------|-------------|
| Beam Angle: 34° | | |
| h(m) | E(lx) | D(m) |
| 1 | 605 | 0.61 |
| 2 | 151 | 1.23 |
| 3 | 67 | 1.84 |
| 4 | 38 | 2.46 |
| 5 | 24 | 3.07 |

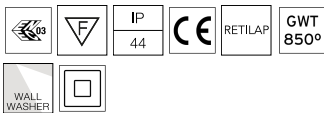
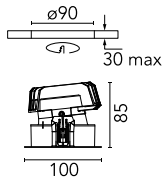
Luminous flux luminaire
316 lm (EXTREME CUT OFF)

Electrical

| | | | |
|-----------------------|--|-------------------------|---------|
| Frequency (Hz) | 50/60 | Emergency | Without |
| Voltage (V) | 220.00 | Insulation class | II |
| Dimmable | Yes | | |
| Driver | Remote included | | |
| Driver type | Dimmable Push, Dimmable 1- 10V, Dimmable DALI 1 | | |

Physical

| | |
|----------------------------|--------|
| Color | Chrome |
| Orientation | Fixed |
| Recessed depth (mm) | 145 |
| Weight (kg) | 0.49 |



Light Sniper Wall-Washer Square Dimmable



Ceiling protector accessory. 50 Units
08.8243.00.5U



Ceiling protector accessory.
08.8243.00



Honeycomb
08.8412.14



Elliptical light distribution lens
08.8041.68



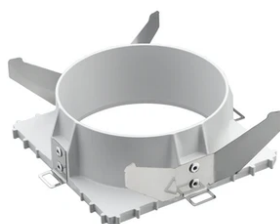
Concrete installation can.
08.8250.00



Ceiling protector accessory. 10 Units
08.8243.00.1U



Ceiling protector accessory. Square
08.8222.30A



Flush ceiling square frame accessory
08.8240.00B