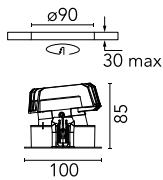


Light Sniper Wall-Washer Square

■ 03.4991.06 - Chrome

High-performance recessed luminaire with LED light source. Remote 220-240V power supply included.

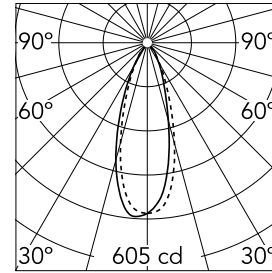


Main specifications

Number of heads	1	Net lumen (lm)	316
Lamp category	LED	Mountings	Ceiling recessed
Power (W)	11W	Environment	Indoor dry location
CCT (K)	2700K		
CRI	90		

Optical

Lighting type	Indirect, Direct
LED type	Power LED
Light distribution	Asymmetric
Optical type	Wall-washer
Beam angle (°)	34
Beam angle C90-270 (°)	36



Beam Angle:	34°		
h(m)	E(lx)	D(m)	
1	605	0.61	
2	151	1.23	
3	67	1.84	
4	38	2.46	
5	24	3.07	

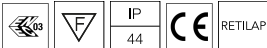
Luminous flux luminaire
316 lm (EXTREME CUT OFF)

Electrical

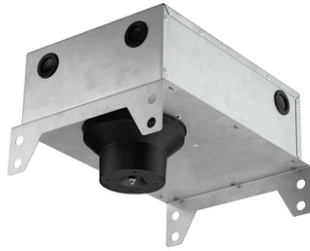
Frequency (Hz)	50/60	Emergency	Without
Voltage (V)	220.00	Insulation class	II
Dimmable	No		
Driver	Remote included		
Driver type	Non Dimmable		

Physical

Color	Chrome
Orientation	Fixed
Recessed depth (mm)	145
Weight (kg)	0.49



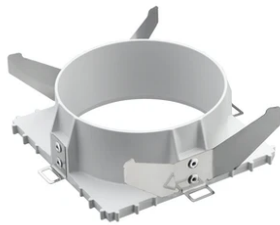
Light Sniper Wall-Washer Square



Ceiling protector accessory.
08.8243.00

Concrete instalation can.
08.8250.00

Ceiling protector accessory. 10 Units
08.8243.00.1U



Flush ceiling square frame accessory
08.8240.00B

Elliptical light distribution lens
08.8041.68

Ceiling protector accessory. Square
08.8222.30A



Honeycomb
08.8412.14

Ceiling protector accessory. 50 Units
08.8243.00.5U