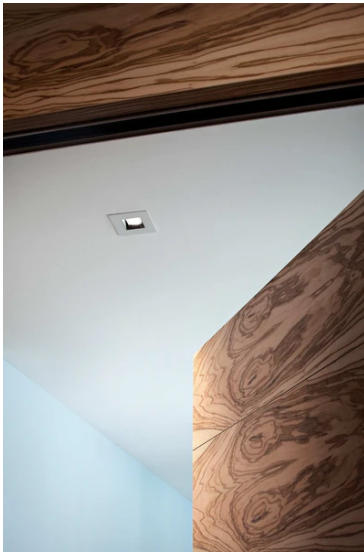


## Light Sniper Fixed Square

■ 03.4983.GL - Gold

High-performance recessed luminaire with LED light source. Remote 220-240V power supply included.

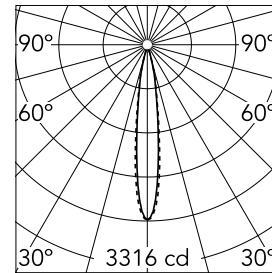


### Main specifications

<b>Number of heads</b>	1	<b>Net lumen (lm)</b>	335
<b>Lamp category</b>	LED	<b>Mountings</b>	Ceiling recessed
<b>Power (W)</b>	11W	<b>Environment</b>	Indoor dry location
<b>CCT (K)</b>	2700K		
<b>CRI</b>	90		

### Optical

<b>Lighting type</b>	Direct
<b>LED type</b>	Power LED
<b>Light distribution</b>	Symmetric
<b>Optical type</b>	Spot
<b>Beam angle (°)</b>	14
<b>Beam angle C90-270 (°)</b>	15



<b>Beam Angle:</b>	14°		
<b>h(m)</b>	<b>E(lx)</b>	<b>D(m)</b>	
1	3316	0.25	
2	829	0.50	
3	368	0.75	
4	207	0.99	
5	133	1.24	

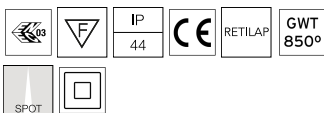
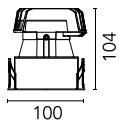
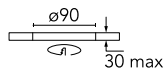
Luminous flux luminaire  
335 lm (EXTREME CUT OFF)

### Electrical

<b>Frequency (Hz)</b>	50/60	<b>Emergency</b>	Without
<b>Voltage (V)</b>	220.00	<b>Insulation class</b>	II
<b>Dimmable</b>	No		
<b>Driver</b>	Remote included		
<b>Driver type</b>	Non Dimmable		

### Physical

<b>Color</b>	Gold
<b>Orientation</b>	Fixed
<b>Recessed depth (mm)</b>	165
<b>Weight (kg)</b>	0.49



## Light Sniper Fixed Square



---

Honeycomb  
08.8412.14



---

Ceiling protector accessory. 50 Units  
08.8243.00.5U



---

Elliptical light distribution lens  
08.8041.68



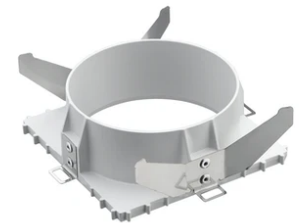
---

Ceiling protector accessory. Square  
08.8222.30A



---

Ceiling protector accessory. 10 Units  
08.8243.00.1U



---

Flush ceiling square frame accessory  
08.8240.00B



---

Ceiling protector accessory.  
08.8243.00



---

Concrete instalation can.  
08.8250.00