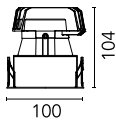
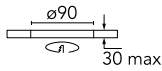


Light Sniper Fixed Square

■ 03.4982.14A - Matt black

High-performance recessed luminaire with LED light source. Remote 220-240V power supply included.

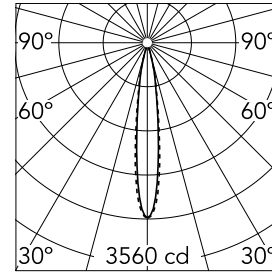


Main specifications

Number of heads	1	Net lumen (lm)	360
Lamp category	LED	Mountings	Ceiling recessed
Power (W)	11W	Environment	Indoor
CCT (K)	3000K		
CRI	90		

Optical

Lighting type	Direct
LED type	Power LED
Light distribution	Symmetric
Optical type	Spot
Beam angle (°)	14
Beam angle C90-270 (°)	15



Beam Angle: 14°

h(m)	E(lx)	D(m)
1	3560	0.25
2	890	0.50
3	396	0.75
4	222	0.99
5	142	1.24

Luminous flux luminaire
360 lm (EXTREME CUT OFF)

Electrical

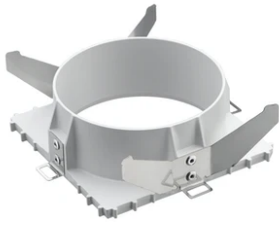
Frequency (Hz)	50/60	Emergency	Without
Voltage (V)	220.00	Insulation class	II
Dimmable	No		
Driver	Remote		
Driver type	Electronic		

Physical

Color	Matt black
Orientation	Fixed
Recessed depth (mm)	165
Weight (kg)	0.49



Light Sniper Fixed Square



Flush ceiling square frame accessory
08.8240.00B



Ceiling protector accessory.
08.8243.00



Ceiling protector accessory. 50 Units
08.8243.00.5U



Ceiling protector accessory. 10 Units
08.8243.00.1U



Concrete installation can.
08.8250.00



Ceiling protector accessory. Square
08.8222.30A



Elliptical light distribution lens
08.8041.68



Honeycomb
08.8412.14