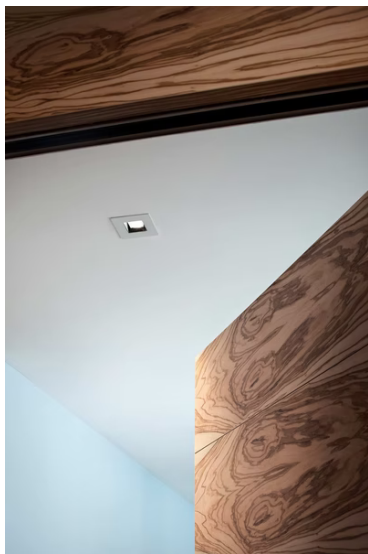


Light Sniper Adjustable Square

■ 03.4999.06 - Chrome

High-performance recessed luminaire with LED light source. Remote 220-240V power supply included.

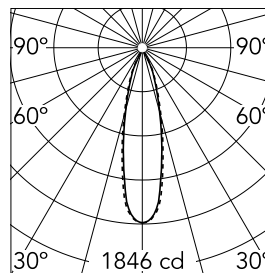


Main specifications

| | | | |
|-----------------|-------|----------------|---------------------|
| Number of heads | 1 | Net lumen (lm) | 503 |
| Lamp category | LED | Mountings | Ceiling recessed |
| Power (W) | 11W | Environment | Indoor dry location |
| CCT (K) | 2700K | | |
| CRI | 90 | | |

Optical

| | |
|------------------------|-----------|
| Lighting type | Direct |
| LED type | Power LED |
| Light distribution | Symmetric |
| Optical type | Medium |
| Beam angle (°) | 25 |
| Beam angle C90-270 (°) | 27 |



Beam Angle: 25°

| h(m) | E(lx) | D(m) |
|------|-------|------|
| 1 | 1846 | 0.45 |
| 2 | 462 | 0.89 |
| 3 | 205 | 1.34 |
| 4 | 115 | 1.79 |
| 5 | 74 | 2.24 |

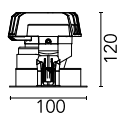
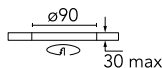
Luminous flux luminaire
503 lm (EXTREME CUT OFF)

Electrical

| | | | |
|----------------|-----------------|------------------|---------|
| Frequency (Hz) | 50/60 | Emergency | Without |
| Voltage (V) | 220.00 | Insulation class | II |
| Dimmable | No | | |
| Driver | Remote included | | |
| Driver type | Non Dimmable | | |

Physical

| | |
|---------------------|------------|
| Color | Chrome |
| Orientation | Adjustable |
| Recessed depth (mm) | 155 |
| Weight (kg) | 0.65 |
| Rotation (°) | 360 |



Light Sniper Adjustable Square



Ceiling protector accessory. 50 Units
08.8243.00.5U



Elliptical light distribution lens
08.8041.68



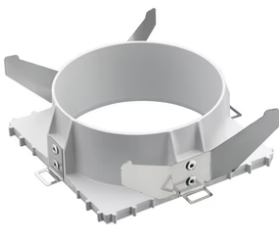
Ceiling protector accessory. 10 Units
08.8243.00.1U



Concrete instalation can.
08.8250.00



Ceiling protector accessory.
08.8243.00



Flush ceiling square frame accessory
08.8240.00B



Honeycomb
08.8412.14



Ceiling protector accessory. Square
08.8222.30A