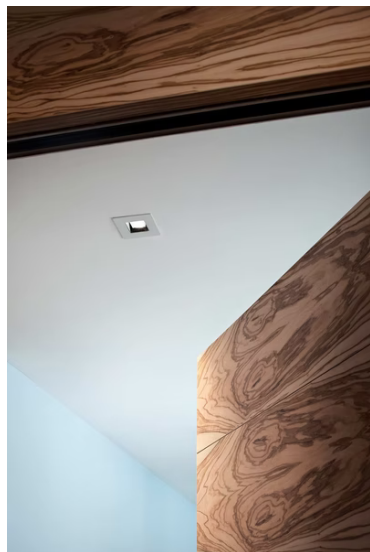


Light Sniper Adjustable Square

■ 03.4687.14A - Matt Black

High-performance recessed luminaire with LED light source. Remote 220-240V power supply included.

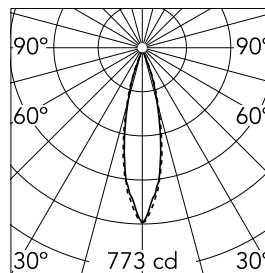


Main specifications

| | | | |
|-----------------|-------|----------------|---------------------|
| Number of heads | 1 | Net lumen (lm) | 153 |
| Lamp category | LED | Mountings | Ceiling recessed |
| Power (W) | 9W | Environment | Indoor dry location |
| CCT (K) | 3000K | | |
| CRI | 98 | | |

Optical

| | |
|------------------------|--------------|
| Lighting type | Direct |
| LED type | Phosphor LED |
| Light distribution | Symmetric |
| Optical type | Wide flood |
| Beam angle (°) | 24 |
| Beam angle C90-270 (°) | 25 |



Beam Angle: 24°

| h(m) | E(lx) | D(m) |
|------|-------|------|
| 1 | 773 | 0.42 |
| 2 | 193 | 0.85 |
| 3 | 86 | 1.27 |
| 4 | 48 | 1.69 |
| 5 | 31 | 2.11 |

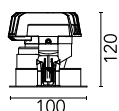
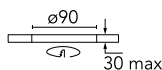
Luminous flux luminaire
153 lm (EXTREME CUT OFF)

Electrical

| | | | |
|----------------|-----------------|------------------|---------|
| Frequency (Hz) | 50/60 | Emergency | Without |
| Voltage (V) | 220.00 | Insulation class | II |
| Dimmable | No | | |
| Driver | Remote included | | |
| Driver type | Non Dimmable | | |

Physical

| | |
|---------------------|------------|
| Color | Matt Black |
| Orientation | Adjustable |
| Recessed depth (mm) | 125 |
| Weight (kg) | 0.51 |
| Rotation (°) | 360 |



Light Sniper Adjustable Square



Ceiling protector accessory. 50 Units
08.8243.00.5U



Ceiling protector accessory. Square
08.8222.30A



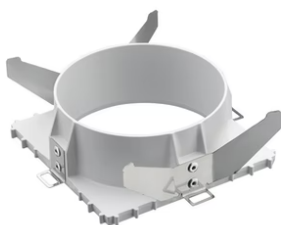
Ceiling protector accessory. 10 Units
08.8243.00.1U



Concrete instalation can.
08.8250.00



Ceiling protector accessory.
08.8243.00



Flush ceiling square frame accessory
08.8240.00B