



## Light Shadow Pro Ø90 Adjustable Optic Super Spot

03.9985.40 - White

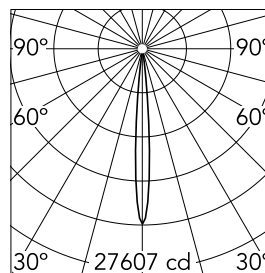
LED lighting module, with low glare, to be inserted in the recessed frames (not included), installation through a bayonet system with interchangeable spots. Remote driver not included.

### Main specifications

Number of heads	1	Net lumen (lm)	808
Lamp category	LED	Mountings	Recessed
Power (W)	10W	Environment	Indoor
CCT (K)	3000K		
CRI	90		

### Optical

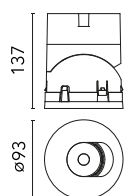
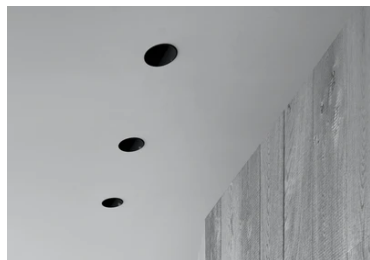
Lighting type	Direct
LED type	LED array
Light distribution	Symmetric
Optical type	Super spot
Beam angle (°)	9
Beam angle C90-270 (°)	9



Beam Angle: 9°

h(m)	E(lx)	D(m)
1	27607	0.16
2	6902	0.31
3	3067	0.47
4	1725	0.62
5	1104	0.78

Luminous flux luminaire  
808 lm

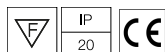


### Electrical

Current (mA)	750	Insulation class	III
Dimmable	Yes		
Driver	Remote		
Driver type	Electronic, Electronic dimnable 1- 10V, Electronic dimnable DALI		
Emergency	Without		

### Physical

Color	White	Rotation (°)	355
Orientation	Adjustable	Spot diameter (mm)	90
Recessed depth (mm)	111		
Weight (kg)	0.54		
Tilt (°)	35		



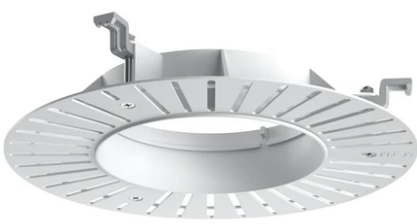
Light Shadow Pro Ø90 Adjustable Optic Super Spot



Installation Frame Trim  
08.0165.40



Installation Frame Trim  
08.0165.14



Installation Frame No Trim  
08.0167.00



Continuous current power supply, 0/1-10V dimmable, 220/240V – 50/60Hz, 36W – 700 mA  
60.9439



Continuous current supply source of 240V – 50/60Hz with dimmable DALI 2  
60.9186



Continuous current power supply of 13-42W, 220/240V – 50/60Hz with power current selected through adjustable switch  
60.9162



Continuous current power supply of 13-20W, 110\*/240V – 50/60Hz with power current selected through adjustable switch. 1-10V or push  
60.9467



Continuous current power supply, Mains dimming 220/240V – 50/60Hz, 12-20W  
60.9467



Continuous current power supply, dimmable Casambi, 220/240V – 50/60Hz, 35W – 650mA / 36W – 700 mA.  
60.9207

